

# Multiwavelength variability and correlation studies of Mrk 421 during historically low X-ray and $\gamma$ -ray activity in 2015–2016

V. A. Acciari<sup>1</sup>, S. Ansoldi<sup>2,3</sup>, L. A. Antonelli<sup>4</sup>, K. Asano<sup>3</sup>, A. Babić<sup>5</sup>, B. Banerjee<sup>6\*</sup>,  
 A. Baquero<sup>7</sup>, U. Barres de Almeida<sup>8</sup>, J. A. Barrio<sup>7</sup>, J. Becerra González<sup>1</sup>, W. Bednarek<sup>9</sup>,  
 L. Bellizzi<sup>10</sup>, E. Bernardini<sup>11,12</sup>, M. Bernardos<sup>13</sup>, A. Berti<sup>14</sup>, J. Besenrieder<sup>15</sup>, W. Bhattacharyya<sup>11</sup>,  
 C. Bigongiari<sup>4</sup>, O. Blanch<sup>16</sup>, G. Bonnoli<sup>10</sup>, Ž. Bošnjak<sup>5</sup>, G. Busetto<sup>12</sup>, R. Carosi<sup>17</sup>,  
 G. Ceribella<sup>15</sup>, M. Cerruti<sup>18</sup>, Y. Chai<sup>15</sup>, A. Chilingarian<sup>19</sup>, S. Cikota<sup>5</sup>, S. M. Colak<sup>16</sup>,  
 E. Colombo<sup>1</sup>, J. L. Contreras<sup>7</sup>, J. Cortina<sup>13</sup>, S. Covino<sup>4</sup>, G. D’Amico<sup>15</sup>, V. D’Elia<sup>4</sup>,  
 P. Da Vela<sup>17†</sup>, F. Dazzi<sup>4</sup>, A. De Angelis<sup>12</sup>, B. De Lotto<sup>2</sup>, M. Delfino<sup>16</sup>, J. Delgado<sup>16‡</sup>,  
 C. Delgado Mendez<sup>13</sup>, D. Depaoli<sup>14</sup>, T. Di Girolamo<sup>14</sup>, F. Di Pierro<sup>14</sup>, L. Di Venere<sup>14</sup>,  
 E. Do Souto Espiñeira<sup>16</sup>, D. Dominis Prester<sup>5</sup>, A. Donini<sup>2</sup>, M. Doro<sup>12</sup>, V. Fallah Ramazani<sup>20</sup>,  
 A. Fattorini<sup>21</sup>, G. Ferrara<sup>4</sup>, L. Foffano<sup>12</sup>, M. V. Fonseca<sup>7</sup>, L. Font<sup>22</sup>, C. Fruck<sup>15</sup>, S. Fukami<sup>3</sup>,  
 R. J. García López<sup>1</sup>, M. Garczarczyk<sup>11</sup>, S. Gasparyan<sup>19</sup>, M. Gaug<sup>22</sup>, N. Giglietto<sup>14</sup>,  
 F. Giordano<sup>14</sup>, P. Gliwny<sup>9</sup>, N. Godinović<sup>5</sup>, J. G. Green<sup>4</sup>, D. Green<sup>15</sup>, D. Hadasch<sup>3</sup>,  
 A. Hahn<sup>15</sup>, L. Heckmann<sup>15</sup>, J. Herrera<sup>1</sup>, J. Hoang<sup>7</sup>, D. Hrupec<sup>5</sup>, M. Hütten<sup>15</sup>, T. Inada<sup>3</sup>,  
 S. Inoue<sup>3</sup>, K. Ishio<sup>15</sup>, Y. Iwamura<sup>3</sup>, J. Jormanainen<sup>20</sup>, L. Jouvin<sup>16</sup>, Y. Kajiwara<sup>3</sup>, M. Karjalainen<sup>1</sup>,  
 D. Kerszberg<sup>16</sup>, Y. Kobayashi<sup>3</sup>, H. Kubo<sup>3</sup>, J. Kushida<sup>3</sup>, A. Lamastra<sup>4</sup>, D. Lelas<sup>5</sup>, F. Leone<sup>4</sup>,  
 E. Lindfors<sup>20</sup>, S. Lombardi<sup>4</sup>, F. Longo<sup>2§</sup>, M. López<sup>7</sup>, R. López-Coto<sup>12</sup>, A. López-Oramas<sup>1</sup>,  
 S. Loporchio<sup>14</sup>, B. Machado de Oliveira Fraga<sup>8</sup>, C. Maggio<sup>22</sup>, P. Majumdar<sup>6\*</sup>, M. Makariev<sup>23</sup>,  
 M. Mallamaci<sup>12</sup>, G. Maneva<sup>23</sup>, M. Manganaro<sup>5</sup>, L. Maraschi<sup>4</sup>, M. Mariotti<sup>12</sup>, M. Martínez<sup>16</sup>,  
 D. Mazin<sup>3,15</sup>, S. Mender<sup>21</sup>, S. Mićanović<sup>5</sup>, D. Miceli<sup>2</sup>, T. Miener<sup>7</sup>, M. Mineev<sup>23</sup>, J. M. Miranda<sup>10</sup>,  
 R. Mirzoyan<sup>15</sup>, E. Molina<sup>18</sup>, A. Moralejo<sup>16</sup>, D. Morcuende<sup>7</sup>, V. Moreno<sup>22</sup>, E. Moretti<sup>16</sup>,  
 P. Munar-Adrover<sup>22</sup>, V. Neustroev<sup>20</sup>, C. Nigro<sup>16</sup>, K. Nilsson<sup>20</sup>, D. Ninci<sup>16</sup>, K. Nishijima<sup>3</sup>,  
 K. Noda<sup>3</sup>, S. Nozaki<sup>3</sup>, Y. Ohtani<sup>3</sup>, T. Oka<sup>3</sup>, J. Otero-Santos<sup>1</sup>, M. Palatiello<sup>2</sup>, D. Paneque<sup>15\*</sup>,  
 R. Paoletti<sup>10</sup>, J. M. Paredes<sup>18</sup>, L. Pavletić<sup>5</sup>, P. Peñil<sup>7</sup>, C. Perennes<sup>12</sup>, M. Persic<sup>2||</sup>, P. G. Prada  
 Moroni<sup>17</sup>, E. Prandini<sup>12</sup>, C. Priyadarshi<sup>16</sup>, I. Puljak<sup>5</sup>, W. Rhode<sup>21</sup>, M. Ribó<sup>18</sup>, J. Rico<sup>16</sup>,  
 C. Righi<sup>4</sup>, A. Rugliancich<sup>17</sup>, L. Saha<sup>7</sup>, N. Sahakyan<sup>19</sup>, T. Saito<sup>3</sup>, S. Sakurai<sup>3</sup>, K. Satalecka<sup>11</sup>,  
 B. Schleicher<sup>24</sup>, K. Schmidt<sup>21</sup>, T. Schweizer<sup>15</sup>, J. Sitarek<sup>9</sup>, I. Šnidarić<sup>5</sup>, D. Sobczynska<sup>9</sup>,  
 A. Spolon<sup>12</sup>, A. Stamerra<sup>4</sup>, D. Strom<sup>15</sup>, M. Strzys<sup>3</sup>, Y. Suda<sup>15</sup>, T. Surić<sup>5</sup>, M. Takahashi<sup>3</sup>,  
 F. Tavecchio<sup>4</sup>, P. Temnikov<sup>23</sup>, T. Terzić<sup>5\*</sup>, M. Teshima<sup>15,3</sup>, N. Torres-Albà<sup>18</sup>, L. Tosti<sup>14</sup>,  
 S. Truzzi<sup>10</sup>, J. van Scherpenberg<sup>15</sup>, G. Vanzo<sup>1</sup>, M. Vazquez Acosta<sup>1</sup>, S. Ventura<sup>10</sup>,  
 V. Verguilov<sup>23</sup>, C. F. Vigorito<sup>14</sup>, V. Vitale<sup>14</sup>, I. Vovk<sup>3</sup>, M. Will<sup>15</sup>, D. Zarić<sup>5</sup>,  
 (The MAGIC Collaboration), A. Arbet-Engels<sup>25¶</sup>, D. Baack<sup>26¶</sup>, M. Balbo<sup>27</sup>, M. Beck<sup>25#</sup>

\* Corresponding authors: B. Banerjee, P. Majumdar, D. Paneque, and T. Terzić. Contact MAGIC Collaboration ([contact.magic@mpp.mpg.de](mailto:contact.magic@mpp.mpg.de))

† Present address: University of Innsbruck, A-6020 Innsbruck, Austria.

‡ Also at Port d’Informació Científica (PIC), E-08193 Bellaterra (Barcelona), Spain.

§ Also at Dipartimento di Fisica, Università di Trieste, I-34127 Trieste, Italy.

|| Also at INAF-Trieste and Dept. of Physics & Astronomy, University of Bologna.

¶ Also in MAGIC.

# Also at RWTH Aachen University, D-52062 Aachen, Germany.

N. Biederbeck,<sup>26</sup> A. Biland<sup>ib, 25</sup>, T. Bretz,<sup>25#</sup> K. Bruegge,<sup>26</sup> J. Buss,<sup>26</sup> D. Dorner<sup>ib, 28</sup>, D. Elsaesser<sup>ib, 26</sup>, D. Hildebrand,<sup>25</sup> R. Iotov,<sup>28</sup> M. Klinger,<sup>25#</sup> K. Mannheim<sup>ib, 28</sup>, D. Neise,<sup>25</sup> A. Neronov<sup>ib, 27</sup>, M. Noethe,<sup>26</sup> A. Paravac,<sup>28</sup> W. Rhode,<sup>26</sup> B. Schleicher,<sup>28</sup> V. Sliusar,<sup>27</sup> F. Theissen,<sup>25#</sup> R. Walter,<sup>27</sup> (The FACT collaboration), J. Valverde,<sup>29</sup> D. Horan,<sup>29</sup> M. Giroletti,<sup>30</sup> M. Perri,<sup>31,32</sup> F. Verrecchia,<sup>31,32</sup> C. Leto,<sup>31,33</sup> A. C. Sadun,<sup>34</sup> J. W. Moody,<sup>35</sup> M. Joner,<sup>35</sup> A. P. Marscher,<sup>36</sup> S. G. Jorstad,<sup>36,37</sup> A. Lähteenmäki,<sup>38,39</sup> M. Tornikoski,<sup>38</sup> V. Ramakrishnan,<sup>38,40</sup> E. Järvelä,<sup>38,41</sup> R. J. C. Vera,<sup>38,39</sup> S. Righini<sup>42</sup> and A. Y. Lien<sup>43,44</sup>

*Affiliations are listed at the end of the paper*

Accepted 2020 November 17. Received 2020 November 6; in original form 2020 June 30

## ABSTRACT

We report a characterization of the multiband flux variability and correlations of the nearby ( $z = 0.031$ ) blazar Markarian 421 (Mrk 421) using data from Metsähovi, *Swift*, *Fermi*-LAT, MAGIC, FACT, and other collaborations and instruments from 2014 November till 2016 June. Mrk 421 did not show any prominent flaring activity, but exhibited periods of historically low activity above 1 TeV ( $F_{>1\text{TeV}} < 1.7 \times 10^{-12}$  ph cm<sup>-2</sup> s<sup>-1</sup>) and in the 2–10 keV (X-ray) band ( $F_{2-10\text{keV}} < 3.6 \times 10^{-11}$  erg cm<sup>-2</sup> s<sup>-1</sup>), during which the *Swift*-BAT data suggest an additional spectral component beyond the regular synchrotron emission. The highest flux variability occurs in X-rays and very high-energy ( $E > 0.1$  TeV)  $\gamma$ -rays, which, despite the low activity, show a significant positive correlation with no time lag. The HR<sub>keV</sub> and HR<sub>TeV</sub> show the *harder-when-brighter* trend observed in many blazars, but the trend flattens at the highest fluxes, which suggests a change in the processes dominating the blazar variability. Enlarging our data set with data from years 2007 to 2014, we measured a positive correlation between the optical and the GeV emission over a range of about 60 d centred at time lag zero, and a positive correlation between the optical/GeV and the radio emission over a range of about 60 d centred at a time lag of  $43^{+9}_{-6}$  d. This observation is consistent with the radio-bright zone being located about 0.2 parsec downstream from the optical/GeV emission regions of the jet. The flux distributions are better described with a lognormal function in most of the energy bands probed, indicating that the variability in Mrk 421 is likely produced by a multiplicative process.

**Key words:** radiation mechanisms: non-thermal – methods: data analysis – methods: observational – galaxies: active – BL Lacertae objects: individual: Mrk 421.

## 1 INTRODUCTION

Markarian 421 (Mrk 421), located at a redshift  $z = 0.031$  (Ulrich et al. 1975), is an extensively studied TeV source. It was first detected as a TeV emitter by the Whipple telescope in 1992 (Punch et al. 1992). Mrk 421 is a BL Lac type object whose broad-band spectrum is characterized by a double-peak structure, where the first peak originates from the synchrotron radiation by leptons inside the jet. The origin of the second peak is believed to be synchrotron self-Compton (SSC) emission (Bloom & Marscher 1996; van den Berg et al. 2019), although hadronic scenarios (e.g. Mannheim 1993; Mücke et al. 2003) have also been used to explain the high-energy emission of Mrk 421 (e.g. Abdo et al. 2011; Petropoulou, Coenders & Dimitrakoudis 2016).

The light curve (LC) of Mrk 421 is highly variable, and it has gone into outburst several times in all bands (radio to TeV) in which it is observed. During an outburst, the TeV emission can vary on sub-hour time-scales (Gaidos et al. 1996; Abeysekara et al. 2020). Many attempts have been made to trace the ongoing physical processes inside the jet. The majority of the simultaneous multiwavelength (MWL) observations were performed during flaring activity, when the VHE  $\gamma$ -ray flux of Mrk 421 exceeded the flux of the Crab Nebula<sup>1</sup>

(there after 1 Crab) by 2–3 times, which is the standard candle for ground-based  $\gamma$ -ray instruments (Macomb et al. 1995; McEnery et al. 1997; Zweerink et al. 1997; Krennrich et al. 2002; Acciari et al. 2011; Aleksić et al. 2015c). Only a handful of attempts have been made to study the broad-band emission of Mrk 421 during non-flaring episodes. For instance, Horan et al. (2009) report a very detailed study using MWL observations of Mrk 421 that were not triggered by flaring episodes. But the VHE  $\gamma$ -ray activity of Mrk 421 during this observing campaign (mostly in 2006) was twice the typical VHE  $\gamma$ -ray activity of Mrk 421, which, according to Acciari et al. (2014), is half the flux of the Crab Nebula. Moreover, the data from Horan et al. (2009) actually contained two flaring episodes, when the flux from Mrk 421 was higher than double that of the Crab Nebula for several days. On the other hand, Aleksić et al. (2015b) performed a study with the data from a MWL campaign in 2009, when Mrk 421 was at its typical VHE  $\gamma$ -ray flux level, and Baloković et al. (2016) reported an extensive study with data from 2013 January–March, when Mrk 421 showed very low-flux at X-ray and VHE.

One of the key aspects that has been investigated in several past MWL campaigns on Mrk 421 is the correlation between X-rays and VHE  $\gamma$ -rays. A direct correlation between these two wave-bands has been reported in several articles (e.g. Macomb et al. 1995; Buckley et al. 1996; Albert et al. 2007; Fossati et al. 2008; Donnarumma et al. 2009; Abdo et al. 2011; Acciari et al. 2011; Cao & Wang 2013; Aleksić et al. 2015c; Bartoli et al. 2016). However, almost all of these studies were carried out during flaring activity. There are only

<sup>1</sup>The flux of the Crab Nebula, used in this work for reference purposes, is retrieved from Aleksić et al. (2015a).

two cases which report such a correlation during low activity without flares: Aleksić et al. (2015b) measured the VHE/X-ray correlation with a marginal significance of  $3\sigma$ , and Baloković et al. (2016), report the VHE/X-ray correlation with high significance despite the low-flux in X-ray and VHE  $\gamma$ -rays thanks to the very high sensitivity *NuSTAR* and stereoscopic data from MAGIC and VERITAS. The emission among the other energy bands appears to be less correlated than that for the X-ray and VHE bands, and Macomb et al. (1995), Albert et al. (2007), Cao & Wang (2013), and Baloković et al. (2016) reported no correlation between the optical/UV and X-rays and the optical/UV and TeV bands during low states of the source.

Using data taken in 2009, Aleksić et al. (2015b) found a negative correlation between the optical/UV and the X-ray emission. The cause of this correlation was the long-term trend in the optical/UV and in X-ray activity; while the former increased during the entire observing campaign, the latter systematically decreased. This correlation was statistically significant when considering only the 2009 data set but, using data from 2007 to 2015, Carnerero et al. (2017) did not measure any overall correlation between the optical and the X-ray emission. On the other hand, Carnerero et al. (2017) did find a correlation between the GeV and the optical emission. This correlation study used the discrete correlation function (DCF; Edelson & Krolik 1988) and identified a peak with a DCF value of about 0.4, centred at zero time lag ( $\tau$ ) but extending over many tens of days to positive and negative values. However, the statistical significance of this correlation was not reported. As for the radio bands, the 5 GHz radio outburst lasting a few days in 2001 February/March, and occurring at approximately the same time as an X-ray and VHE flare, was reported by Katarzyński, Sol & Kus (2003) as evidence of correlation without any time lag between the radio and X-ray/VHE emission in Mrk 421. But the statistical significance of this positive correlation was not reported. As there were many similar few-day X-ray and VHE flares throughout 2001, but only a single radio flare, the claimed correlation may simply be chance coincidence. Using the low activity data taken over almost the whole year 2011, Lico et al. (2014) reported a marginally significant ( $\leq 3\sigma$ ) correlation between radio very long baseline interferometry (VLBI) and GeV  $\gamma$ -rays for a range of about  $\pm 30$  d centred at  $\tau = 0$ . Max-Moerbeck et al. (2014), however, reported a positive correlation between the GeV and radio emission at  $\tau \sim 40$  d. However, the correlation reported there was only at  $2.6\sigma$  significance, and was strongly affected by the large  $\gamma$ -ray and radio flares from 2012 July and September, respectively (Max-Moerbeck et al. 2014).

Overall, the broad-band emission of Mrk 421 is complex, and a dedicated correlation analysis over many years will be necessary in order to properly characterize it. It is relevant to evaluate whether the various trends or peculiar behaviours, sometimes reported in the literature with only marginal significance, are repeated over time, and also to distinguish the typical behaviour from the sporadic events. For the latter, it is important to collect multi-instrument data that are not triggered or motivated by flaring episodes. A better understanding of the low-flux state will not only provide meaningful constraints on the model parameters related to the dynamics of the particles inside the jet, but also will provide a baseline for explaining the high-state activity of the source.

The study presented in this paper focuses on the extensive MWL data set collected during the campaigns in the years 2015 and 2016, when Mrk 421 showed low activity in both X-rays and VHE  $\gamma$ -rays, and no prominent flaring activity ( $>2$  Crabs for several days) was measured. We characterize the variability using the normalized excess variance of the flux (Vaughan et al. 2003) for the X-ray and TeV bands split into two hard bands (2–10 keV and  $>1$  TeV) and two soft bands (0.3–2 keV and 0.2–1 TeV). We use these bands

to compute  $HR_{\text{keV}}$  and  $HR_{\text{TeV}}$  to evaluate the harder-when-brighter behaviour of the source. Using this data set, we present a detailed correlation study for different combinations of wave-bands. In order to better evaluate the correlations among the energy bands with lower amplitude variability and longer variability time-scales, we complemented the 2015–2016 data set with data from previous years (from 2007 to 2014). A fraction of these data had already been published (Aleksić et al. 2012, 2015c; Ahnen et al. 2016; Baloković et al. 2016), and the rest were specifically collected and analysed for the study presented here.

This paper is arranged in the following way: in Section 2, we describe the instruments that participated in this campaign, the data analysis methods used for each energy band, and a summary of the observed MWL data. In Section 3, we discuss the main characteristics of the MWL LCs from the 2015–2016 campaign. In Sections 4 and 5, we discuss the different aspects of the MWL variability and correlation study that we carried out. In Section 6, we characterize the flux distributions in the different wave-bands, and in Section 7 we discuss and summarize the main observational results from our work.

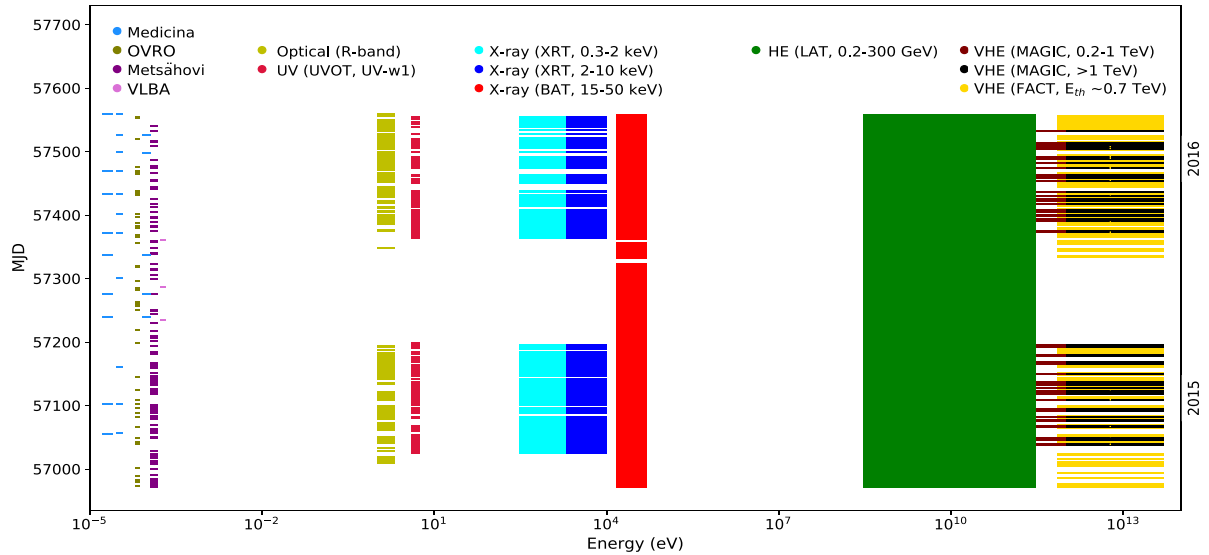
## 2 OBSERVATIONS AND DATA ANALYSIS

The temporal and energy coverage provided by the MWL observations from the 2-yr period reported in this paper, i.e. from 2014 November to 2016 June, is depicted in Fig. 1. We note that there is a period of about 6 months (approximately from 2015 June to 2015 December) when the Sun is too close to Mrk 421, which prevents observations at optical and VHE  $\gamma$ -rays (e.g. with MAGIC and FACT), and even observations at soft X-rays with *Swift*. During this half-year period, Mrk 421 can only be observed at radio, hard X-rays and HE  $\gamma$ -rays, as shown in Fig. 1. In the subsections below, we discuss the instrumentation and data analyses used to characterize the emission of Mrk 421 across the electromagnetic spectrum, from radio to VHE  $\gamma$ -rays.

### 2.1 Radio

The study presented here makes use of radio observations from the single-dish radio telescopes at the Metsähovi Radio Observatory, which operates at 37 GHz, at the Owens Valley Radio Observatory (OVRO, at 15 GHz), and the Medicina radio telescope, which provides multifrequency data at 5, 8, and 24 GHz. The data from OVRO were retrieved directly from the web page of the instrument team,<sup>2</sup> while the data from Metsähovi and Medicina were provided to us directly by the instrument team. Mrk 421 is a point source for all of these instruments, and hence the measurements represent an integration of the full source extension, which has a larger size than the emission that dominates the highly variable X-ray and  $\gamma$ -ray emission, and possibly also the optical emission. Details of the observation and data analysis strategies from OVRO and Medicina are reported in Richards et al. (2011) and Giroletti & Righini (2020), respectively. As for Metsähovi, the detection limit of the telescope at 37 GHz is of the order of 0.2 Jy under optimal conditions. The flux density scale is set by observations of DR 21, and the sources NGC 7027, 3C 274, and 3C 84 are used as secondary calibrators. The error estimate on the Metsähovi flux density includes the contributions from the rms measurement and the uncertainty in the absolute calibration. A detailed description of the data reduction and analysis is given in Teraesranta et al. (1998). In this particular

<sup>2</sup><http://www.astro.caltech.edu/ovroblazars/index.php?page=home>



**Figure 1.** Multi-instrument temporal coverage of Mrk 421 during the 2015–2016 observation campaign.

analysis, as is done in most analyses, the measurements that do not survive a quality control (usually due to unfavourable weather) are discarded semiautomatically. In the final data reduction, the measurements are checked manually, which includes ruling out bad weather conditions or other environmental effects such as, e.g. a rare but distinct flux density increase caused by aircraft in the telescope beam. Additionally, the Metsähovi team also checked that the general flux levels are consistent for adjacent measurements (i.e. other sources observed before and after the target source).

The study also uses the Very Long Baseline Array (VLBA) total and polarized intensity images of Mrk 421 at 43 GHz obtained within the VLBA-BU-BLAZAR program of  $\sim$ monthly monitoring of a sample of  $\gamma$ -ray blazars.<sup>3</sup> The source was observed in a short-scan mode along with  $\sim$ 30 other blazars over 24 h, with  $\sim$ 45 min on the source. A detailed description of the observations and data reduction can be found in Jorstad et al. (2017). The analysis of the polarization properties was based on Stokes Q and U parameter images obtained in the same manner as described in Jorstad et al. (2007).

## 2.2 Optical

In this paper, we use only *R*-band photometry. These optical data were obtained with the KVA telescope (at the Roque de los Muchachos), ROVOR, West Mountain Observatory, and the iTelescopes network. The stars reported in Villata et al. (1998) were used for calibration, and the coefficients given in Schlafly & Finkbeiner (2011) were used to correct for the Galactic extinction. The contribution from the host galaxy in the *R* band, which is about 1/3 of the measured flux, was determined using Nilsson et al. (2007), and subtracted from the values reported in Fig. 2. Additionally, a point-wise fluctuation of 2 per cent on the measured flux was added in quadrature to the statistical uncertainties in order to account for potential day-to-day differences in observations with any of the instruments.

## 2.3 Neil Gehrels *Swift* Observatory

This study uses the following instruments on board the Neil Gehrels *Swift* Observatory (Gehrels et al. 2004):

<sup>3</sup><http://www.bu.edu/blazars/VLBAproject.html>

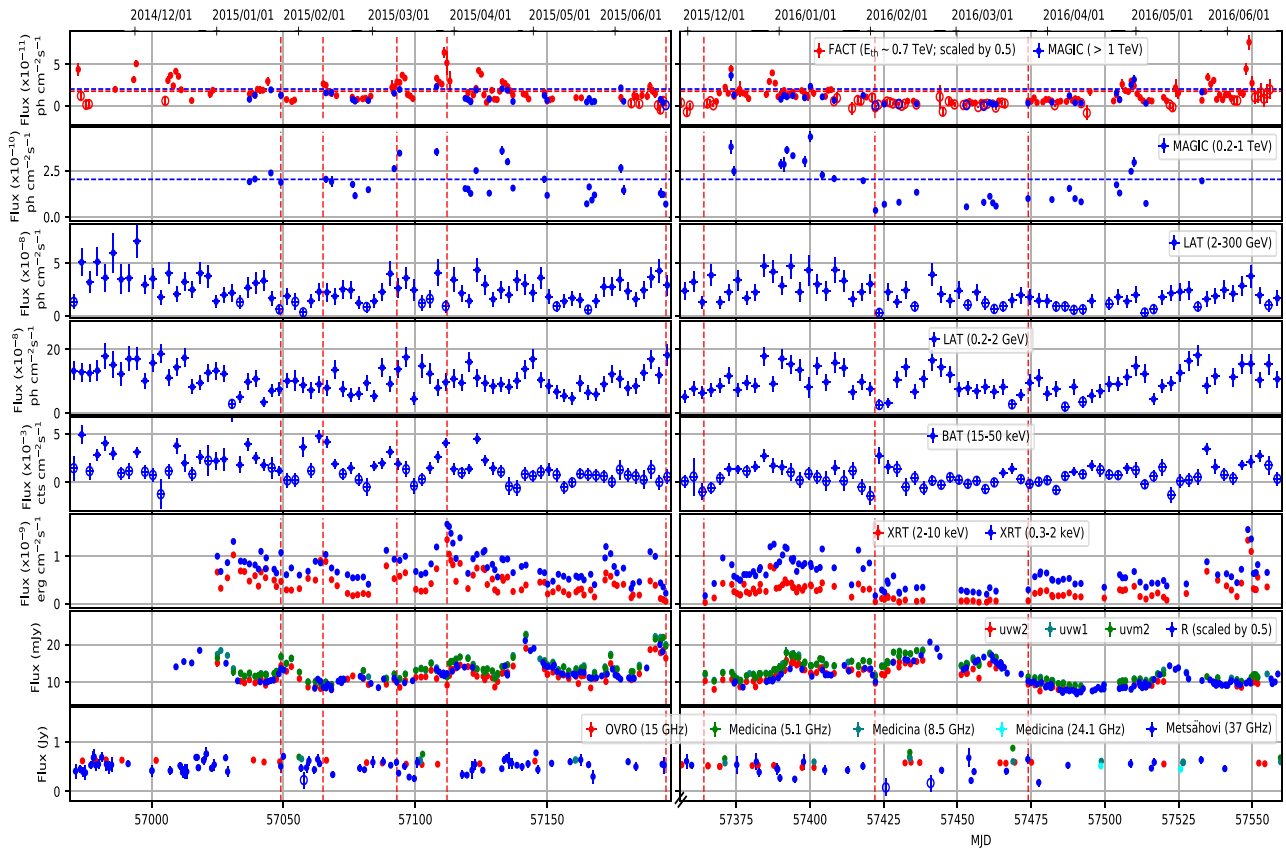
### 2.3.1 UVOT

The *Swift* UV/Optical Telescope (UVOT; Roming et al. 2005) was used to perform observations in the UV range (with the filters W1, M2, and W2). For all of the observations, data were analysed using aperture photometry for all filters using the standard UVOT software distributed within the HEASOFT package (version 6.16), and the calibration files from CALDB version 20130118. The counts were extracted from an aperture of 5 arcsec radius, and converted to fluxes using the standard zero-points from Breeveld et al. (2011). Afterwards, the fluxes were dereddened using  $E(B - V) = 0.012$  (Schlafly & Finkbeiner 2011) with  $A_\lambda/E(B - V)$  ratios calculated using the mean Galactic interstellar extinction curve reported in Fitzpatrick (1999). Mrk 421 is on the ‘ghost wings’ (Li et al. 2006) of the nearby star 51 UMa in many of the observations, and hence the background had to be estimated from two circular apertures of 16 arcsec radius off the source, symmetrically with respect to Mrk 421, excluding stray light and shadows from the support structure.

### 2.3.2 XRT

The *Swift* X-ray Telescope (XRT; Burrows et al. 2005) was used to perform observations in the energy range from 0.3 to 10 keV. All of the *Swift*-XRT observations were taken in the Windowed Timing (WT) readout mode. The data were processed using the XRTDAS software package (v.3.2.0), which was developed by the ASI Space Science Data Center (SSDC) and released by HEASARC in the HEASOFT package (v.6.19). The event files were calibrated and cleaned with standard filtering criteria with the `xrtpipeline` task using the calibration files available from the *Swift*/XRT CALDB (version 20160609). For each observation, the X-ray spectrum was extracted from the summed cleaned event file. Events for the spectral analysis were selected within a circle of 20-pixel ( $\simeq$ 46 arcsec) radius, which encloses about 90 per cent of the point-spread function (PSF), centred at the source position. The background was extracted from a nearby circular region of 40-pixel radius. The ancillary response files (ARFs) were generated with the `xrtmkarf` task applying corrections for PSF losses and CCD defects using the cumulative exposure map.

Before the spectral fitting, the 0.3–10 keV source spectra were binned using the `grppha` task to ensure a minimum of 20 counts



**Figure 2.** From top to bottom: *LCs* of MAGIC, FACT, *Fermi*-LAT, *Swift*-BAT, -XRT, and -UVOT, optical *R*-band telescopes (KVA telescope at the Roque de los Muchachos, ROVOR, Brigham, New Mexico Skies and the *i*Telescopes), Metsähovi, OVRO, and Medicina from 2014 November to 2016 June. A 3-d temporal bin has been used for the HE  $\gamma$ -ray fluxes from *Fermi*-LAT and hard X-ray fluxes from *Swift*-BAT. For all of the other energy bands, individual single night observations are depicted. The vertical dashed red lines represent interesting flux variations discussed in Section 3. The *LCs* from FACT and *R* band are scaled by a factor of 0.5 for better visibility. In the top panel, horizontal blue and red lines represent the flux of the Crab Nebula above 1 TeV and above 0.7 TeV energy (the latter one scaled by a factor of 0.5), respectively. The horizontal line in the second panel from the top represents the flux of the Crab Nebula in the 0.2–1 TeV energy band. The open markers in the MAGIC (> 1 TeV), FACT, LAT, BAT, and Metsähovi *LCs* are used to display flux measurements with a relative error larger than 0.5.

per bin. The spectra were modelled in XSPEC using power-law and log-parabola models that include a photoelectric absorption by a fixed column density estimated to be  $N_{\text{H}} = 1.92 \times 10^{20} \text{ cm}^{-2}$  (Kalberla et al. 2005). The log-parabola model typically fits the data better than the power-law model (though statistical improvement is marginal in many cases), and was therefore used to compute the X-ray fluxes in the energy bands 0.3–2 keV and 2–10 keV, which are reported in Fig. 2.

### 2.3.3 BAT

A daily average flux in the energy range 15–50 keV measured by the *Swift*-BAT instrument was obtained from the BAT website.<sup>4</sup> The detailed analysis procedure can be found in Krimm et al. (2013). The BAT fluxes related to time intervals of multiple days reported in this paper were obtained by performing a standard weighted average of the BAT daily fluxes, which is exactly the same procedure used by the BAT team to obtain the daily fluxes from the orbit-wise fluxes.

### 2.4 *Fermi*-LAT

The GeV  $\gamma$ -ray fluxes related to the 2015–2016 observing campaigns were obtained with the Large Area Telescope (LAT; Atwood et al. 2009) onboard the *Fermi* Gamma-ray Space Telescope. The *Fermi*-LAT data presented in this paper were analysed using the standard *Fermi* analysis software tools (version *v11r07p00*), and the *P8R3\_SOURCE\_V2* response function. We used events from 0.2 to 300 GeV selected within a  $10^\circ$  region of interest (ROI) centred on Mrk 421 and having a zenith distance below  $100^\circ$  to avoid contamination from the Earth’s limb. The diffuse Galactic and isotropic components were modelled with the files *gll\_iem\_v06.fits* and *iso\_P8R3\_SOURCE\_V2.txt*, respectively.<sup>5</sup> All point sources in the third *Fermi*-LAT source catalogue (3FGL; Acero et al. 2015) located in the  $10^\circ$  ROI and an additional surrounding  $5^\circ$ -wide annulus were included in the model. In the unbinned likelihood fit, the spectral shape parameters were fixed to their 3FGL values, while the normalizations of the eight sources within the ROI identified as variable were allowed to vary, as were the normalizations of the diffuse components and the spectral parameters related of Mrk 421.

<sup>4</sup><http://heasarc.nasa.gov/docs/swift/results/transients/>

<sup>5</sup><https://fermi.gsfc.nasa.gov/ssc/data/access/lat/BackgroundModels.html>

Owing to the moderate sensitivity of *Fermi*-LAT to detect Mrk 421 on daily time-scales (especially when the source is not flaring), we performed the unbinned likelihood analysis on 3-d time intervals to determine the LCs in the two energy bands 0.2–2 and 2–300 GeV reported in Fig. 2. The flux values were computed using a power-law function with the index fixed to 1.8, which is the spectral shape that describes Mrk 421 during the 2 yr considered in this study, as well as the power-law index reported in the 3FGL and 4FGL (Acero et al. 2015; Abdollahi et al. 2020). The analysis results are not expected to change when using the 4FGL (Abdollahi et al. 2020) (instead of the 3FGL) for creating the XML file. This is due to the 3-d time intervals considered here, which are very short for regular LAT analyses, implying that only bright sources (i.e. already present in the 3FGL) can significantly contribute to the photon background in the Mrk 421 RoI. We repeated the same procedure fixing the photon indices to 1.5 and 2.0, and found no significant change in the flux values, indicating that the results are not sensitive to the selected photon index used in the differential energy analysis. For the multiyear (2007–2016) correlation study reported in Section 5, where the GeV flux is compared to the radio and optical fluxes, we applied the same analysis described above, but this time for all events above 0.3 GeV in the time interval MJD 54683–57561.

## 2.5 MAGIC

The MAGIC telescope system (Aleksić et al. 2016) consists of two Cherenkov telescopes of 17-m diameter situated on the Canary island of La Palma (28.7° N, 17.9° W) at 2200 m a.s.l. The MAGIC telescopes are sensitive to  $\gamma$ -rays of energies from 50 GeV to 50 TeV using the standard trigger when observing at low zenith distances under dark conditions.

Here, we report on the Mrk 421 data gathered by the MAGIC telescope during the 2015–2016 (MJD 57037–57535) MWL campaign. The observations with the MAGIC telescope system were performed under varying observational conditions which are shown in Table 1. During this MWL campaign, Mrk 421 was observed in the zenith distance range from 5° to 62°. The data were separated in the following sub-samples: (a) Low zenith distance range (5° to 35°), (b) Medium zenith distance range (35° to 50°), and (c) High zenith distance range (50° to 62°). Depending on the influence of the night sky background light, the data were separated in the following sub-samples: (i) dark condition, (ii) low-moon condition, and (iii) high-moon condition, as defined in Ahnen et al. (2017). For analysing data in different background light conditions, the prescriptions from Ahnen et al. (2017) were followed.

Most of the data in this campaign were taken in stereoscopic mode with the standard trigger settings, including a coincidence trigger between telescopes and a 3NN single-telescope trigger logic (event registered when three next-neighbour pixels are triggered; Aleksić et al. 2016). A minor subset was taken in the so-called mono mode (without coincidence trigger) and a 4NN single-telescope trigger logic. The data taken with the latter settings were analysed following the standard analysis procedure with a fixed size cut of 150 photoelectrons (phe) instead of 50 phe (used in standard data analysis). This size cut has been optimized by cross-checking the spectrum of the Crab Nebula observed in the same mode.

Since the analysis energy threshold increases with the background light and larger zenith distance observations, we set a uniform minimum energy of 200 GeV for the entire data sample. The data (in all observation conditions) were analysed using the MAGIC Analysis and Reconstruction Software (MARS; Zanin et al. 2013).

## 2.6 FACT

The First G-APD Cherenkov Telescope (FACT) is an imaging atmospheric Cherenkov telescope with a mirror area of 9.5 m<sup>2</sup>. It is located next to the two MAGIC telescopes at the Observatorio del Roque de los Muchachos (Anderhub et al. 2013). Operational since 2011 October, FACT observes  $\gamma$ -rays in an energy range from a few hundreds of GeV up to about 10 TeV. The observations are performed in a fully remote and automatic way allowing for long-term monitoring of bright TeV sources at low cost.

Owing to a camera using silicon-based photosensors (SiPM, aka Geiger-mode Avalanche Photo Diodes or G-APDs) and a feedback system, to keep the gain of the photosensors stable, FACT achieves a good and stable performance (Biland et al. 2014). The possibility of performing observations during bright ambient light along with almost robotic operation allows for a high instrument duty cycle, minimizing the observational gaps in the LCs (Dorner et al. 2017). Complemented by an unbiased observing strategy, this renders FACT an ideal instrument for long-term monitoring.

Between 2014 November 10 and 2016 June 17 (MJD 56972 to 57556), FACT collected 884.6 h of data on Mrk 421. The data were analysed using the Modular Analysis and Reconstruction Software (MARS; Bretz & Dorner 2010) with the analysis as described in Beck et al. (2019).

To select data with good observing conditions, a data quality selection cut based on the cosmic ray rate was applied (Hildebrand et al. 2017). For this, the artificial trigger rate R750 was calculated, adopting a threshold of 750 DAC-counts, since above this value no effect from the ambient light is found. The dependence of R750 on the zenith distance was determined as described in Mahlke et al. (2017) and Bretz (2019) providing a corrected rate R750<sub>cor</sub>. To account for cosmic ray rate variations due to seasonal atmospheric changes, a reference value R750<sub>ref</sub> was determined for each moon period. Data with good quality were selected using a cut of  $0.93 < R750_{cor}/R750_{ref} < 1.3$ . Furthermore, nights with less than 20 min of good-quality data were rejected.

This results in a total data sample of 637.3 h of Mrk 421 from 239 nights after data quality selection. We further discard nights where Mrk 421 was not significantly ( $2\sigma$ ) detected, resulting in 513.6 h of data from 180 nights.

Based on the  $\gamma$ -ray rate measured from the Crab Nebula, the dependence of the  $\gamma$ -ray rate on zenith distance and trigger threshold was determined and the data were corrected accordingly. For the conversion to flux, the energy threshold was determined using simulated data. The LC as measured by FACT is shown in the top panel of Fig. 2.

## 3 OVERALL MWL ACTIVITY

During the observation periods 2014 November to 2015 June (MJD 57037–57195) and 2015 December to 2016 June (MJD 57364–57525), Mrk 421 showed mostly low activity in the X-ray and VHE  $\gamma$ -ray bands. Fig. 2 shows the MWL LCs from radio to TeV energies observed within this period. In these two MWL campaigns, no large VHE flares (VHE flux >4 Crabs) or extended VHE flaring activities (VHE flux >2 Crabs for several consecutive days) were seen. A slower flux variation in the optical and UV emissions along with stable radio emission have also been seen. In this section, we first report on interesting features of the fluxes measured in different wave-bands during the 2015–2016 campaign, and then discuss a peculiar radio flare.

**Table 1.** Observation conditions at VHE  $\gamma$ -rays with the MAGIC telescopes during the 2015–2016 campaign. Apart from the standard data (3NN), a subset was taken without a coincidence trigger and a 4NN single-telescope trigger logic. See Section 2.5 for details.

| Observation conditions                    | 3NN           |               |              | 4NN          | Moon filter  |
|---|---------------|---------------|--------------|--------------|--------------|
|   | Low-Moon      | Moderate-Moon | High-Moon    | Low-Moon     |              |
| Low-zenith ( $5^\circ$ – $35^\circ$ )     | $\sim 30.0$ h | $\sim 10.0$ h | $\sim 6.0$ h | $\sim 7.0$ h |              |
| Medium-zenith ( $35^\circ$ – $50^\circ$ ) | $\sim 4.0$ h  | $\sim 1.0$ h  | $\sim 1.0$ h | $\sim 2.0$ h | $\sim 3.0$ h |
| High-zenith ( $50^\circ$ – $62^\circ$ )   | 1.0 h         |               | 2.0 h        |              |              |

### 3.1 Identification of notable characteristics

The multi-instrument LC from Fig. 2 shows several unusual characteristics, which are indicated with red vertical line and are discussed in the paragraphs below.

**Intra-night variability on 2015 January 27 and March 12 (MJD 57049 and 57093):** The VHE  $\gamma$ -ray data set was checked for intra-night variability (INV). From the 61 observations with MAGIC and 180 observations with FACT reported here, INV was observed in only two nights, 2015 January 27 (MJD 57049), found in the MAGIC data, and 2015 March 12 (MJD 57093), found in the FACT data. The LCs and details of the INV study are reported in the supplementary online material (Appendix A). In the first case, the VHE flux from Mrk 421 dropped from  $\sim 1.3$  Crab down to  $\sim 0.8$  Crab, while in the second one, where the statistical uncertainties are larger, it decreased from  $\sim 2$  Crab down to  $\sim 1$  Crab. As depicted in Fig. 2, both nights show enhanced X-ray flux, but no particularly high flux in the GeV, optical, or radio bands.

**Spectral hard state on 2015 February 12 (MJD 57065):** This is the only night in the 2015–2016 campaign in which the 2–10 keV flux was higher than the 0.3–2 keV flux. The respective flux values are  $F_{2-10\text{keV}} = (9.12 \pm 0.12) \times 10^{-10} \text{ erg cm}^{-2} \text{ s}^{-1}$  and  $F_{0.3-2\text{keV}} = (8.61 \pm 0.05) \times 10^{-10} \text{ erg cm}^{-2} \text{ s}^{-1}$ . This state is associated with a high hard X-ray flux observed with *Swift*-BAT and a low state in optical *R*- and *UV*-bands.

**Highest X-ray flux during 2015–2016 on 2015 March 31 (MJD 57112):** On this day, the highest flux in the X-ray band during this 2015–2016 campaign was observed. The corresponding fluxes are  $F_{0.3-2\text{keV}} = (1.68 \pm 0.06) \times 10^{-9} \text{ erg cm}^{-2} \text{ s}^{-1}$  and  $F_{2-10\text{keV}} = (1.35 \pm 0.01) \times 10^{-9} \text{ erg cm}^{-2} \text{ s}^{-1}$ . This means that the flux increased by a factor of about five (two) compared to the average X-ray flux in the 2–10 keV (0.3–2 keV) energy band during the 2015–2016 campaign. The contemporaneous VHE  $\gamma$ -ray data from FACT showed a high flux state.

**Low X-ray flux on 2015 June 22 and 2015 December 8 (MJD 57195 and 57364):** The lowest flux in the 2015–2016 campaign in the X-ray band was observed on 2015 December 8 (MJD 57364), with the integrated flux in the 0.3–2 keV and 2–10 keV bands being  $(1.67 \pm 0.03) \times 10^{-10}$  and  $(2.41 \pm 0.15) \times 10^{-11} \text{ erg cm}^{-2} \text{ s}^{-1}$ , respectively. This is the lowest flux ever reported in the 2–10 keV band. Previously, to the best of our knowledge, the lowest flux in the 2–10 keV band was  $(3.5 \pm 0.2) \times 10^{-11} \text{ erg cm}^{-2} \text{ s}^{-1}$ , observed on 2013 January 20 (6th orbit) and reported in Baloković et al. (2016).

On 2015 June 22 (MJD 57195), the source showed similar low-flux levels in the 2–10 keV and 0.2–1 TeV bands to MJD 57364, with measured fluxes of  $(4.95 \pm 0.23) \times 10^{-11} \text{ erg cm}^{-2} \text{ s}^{-1}$  and  $(0.7 \pm 0.1) \times 10^{-10} \text{ ph cm}^{-2} \text{ s}^{-1}$ , respectively.

**Low flux states during 2016 February 4–March 27 (MJD 57422–57474):** On MJD 57422, the source evolved into a state where the flux remained very low in the X-ray and VHE  $\gamma$ -ray bands, as measured with *Swift*-XRT and MAGIC. MAGIC observed the

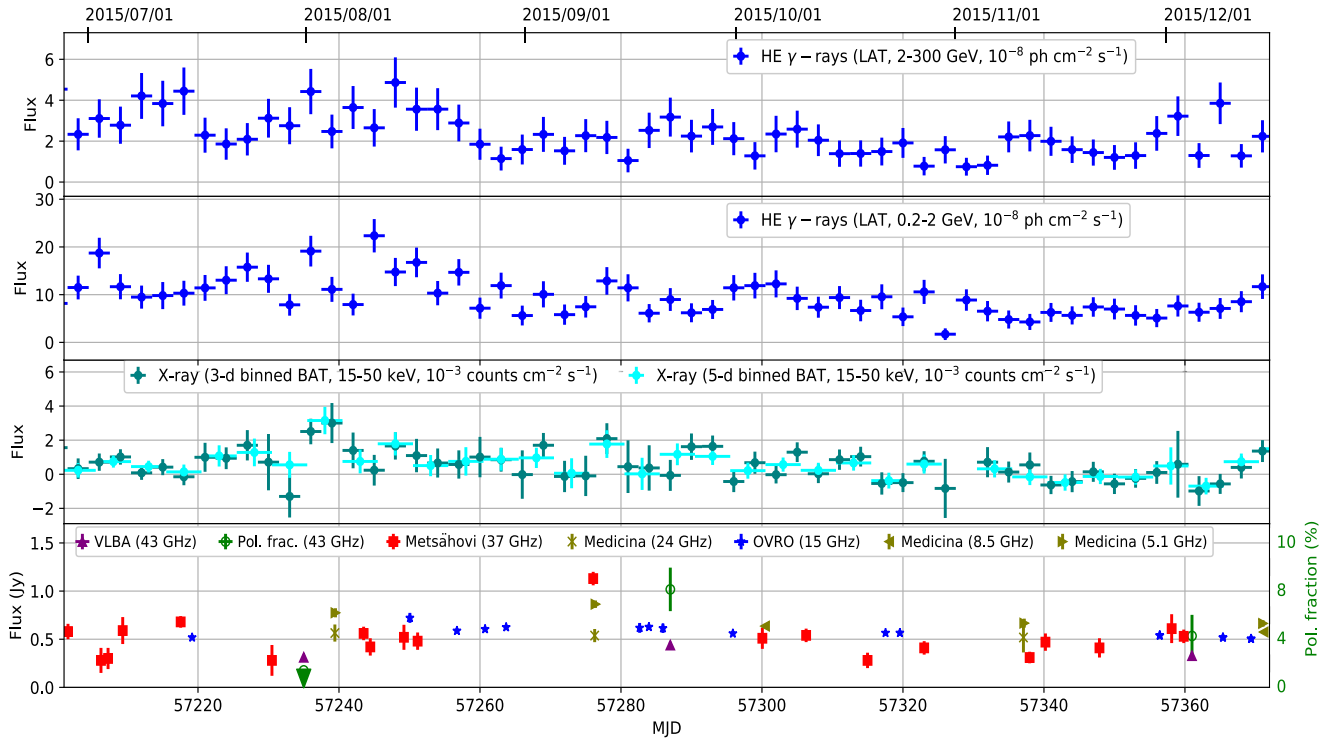
lowest flux state in the 0.2–1 TeV energy band with a flux value of  $(3.56 \pm 0.91) \times 10^{-11} \text{ ph cm}^{-2} \text{ s}^{-1}$ . However, there are a few days (e.g. MJD 57422–57429) with high flux at hard X-ray (15–50 keV), as measured with the *Swift*-BAT instrument. This will be further discussed in Section 4.3.

### 3.2 Peculiar radio flaring activity in 2015 September

On 2015 September 11 (MJD 57276), the 13.7-m diameter Metsähovi radio telescope measured a 37 GHz flux from Mrk 421 of  $1.13 \pm 0.07$  Jy, one of the highest fluxes ever observed at this wavelength and about twice that of any other observation from this campaign, as shown in Fig. 3. Only during the flaring episode from 2012 September was a similar high flux state observed in the 15 GHz radio bands, along with a flare in the HE  $\gamma$ -rays and optical *R* band about 40 d before the radio flare (Hovatta et al. 2015).

There were several 37 GHz measurement attempts of Mrk 421 in late August, late September, and early October, but all of them had to be discarded due to bad weather conditions (for details, see Section 2.1), leaving only the September 11 data point, and making it stand out as the only indication of a high state in that time period. However, a flux increase is also suggested by the OVRO 15 GHz data, in which the flux density level is slightly elevated in late August and September. There are no simultaneous data at 15 and 37 GHz. There are, however, data at 5 and 24 GHz from the Medicina radio telescope on the same date. The 5 GHz flux density is higher than the average value at this frequency, while the 24 GHz does not show any evidence of significant variability.

Within the regular monitoring program of the Boston University group, the VLBA performed three observations around the 2015 September 11 radio flare, namely on August 1 (MJD 57235), September 22 (MJD 57287), and December 5 (MJD 57361). The core VLBA fluxes and linear polarization fraction are displayed in Fig. 3, while the images yielded by these observations are reported in Fig. 4. Within the statistical uncertainties of the VLBA measurements, one does not see any change in the core VLBA radio flux (even though one observation happened only 11 d after the Metsähovi flare), yet there is a clear change in the polarization fraction, from less than 2 per cent for the observation from August 1, to about 8 per cent for the observation from September 22. Additionally, in the image related to the observation from September 22, there is a radial polarization pattern across the Southern half of the core region. This suggests that the magnetic field *B* is roughly circular and centred on the brightness peak of the core, as one might expect from a helical field when one views it down the axis. This polarization pattern remained through 2016 March. The  $\gamma$ -ray LC from the *Fermi*-LAT and X-ray LC from the *Swift*-BAT do not show any obvious flux enhancement during the time of the radio flaring activity, although they show some activity (both BAT and LAT) about 40 d before the radio flare. During this time, there were no optical or VHE observations because of the Sun.



**Figure 3.** MWL LCs around 2015 September, when Metsähovi measured a large flux density increase at 37 GHz. (From the top to the bottom panels) the *Fermi*-LAT  $\gamma$ -ray flux in two energy bands, the *Swift*-BAT X-ray flux, the single-dish Metsähovi 37 GHz, OVRO 15 GHz and the Medicina 5, 8, and 24 GHz flux densities, and the interferometric VLBI core fluxes at 43 GHz for the three measurements performed on August 1, September 22, and December 5. The linear polarization fraction for three VLBA measurements is also reported in the bottom panel with an upper limit on August 1, marked by an inverted triangle in green. See Section 3.2 for details.

The low polarization fraction at 43 GHz on 2015 August 1 implies that the magnetic field was very highly disordered in the core at this epoch. A radial polarization pattern, as measured at 43 GHz on 2015 September 22, can result from turbulent plasma flowing across a conical standing shock, as found in the simulations of Cawthorne, Jorstad & Marscher (2013) and Marscher (2016). However, in such a scenario the linear polarization pattern is always present, since it is created by the partial ordering of the magnetic field by the shock front. Periods of polarization  $< 2$  per cent across the entire core should not be observed.

An alternative picture ascribes the radial polarization pattern to the circular appearance of a magnetic field with a helical or toroidal geometry that is viewed within  $\sim 0.2/\Gamma$  radians of the axis of the jet (Marscher et al. 2002), where  $\Gamma$  is the bulk Lorentz factor of the emitting plasma. In this case, the ratio of the observed polarization measured in the image,  $\sim 8$  per cent, to the value for a uniform magnetic field direction,  $\sim 75$  per cent,<sup>6</sup> implies that the helical field is superposed on a highly disordered field component that is  $\sim 10$  times stronger. If the helical field becomes disrupted by a current-driven kink instability, particle acceleration could cause a flare (Nalewajko 2017; Zhang et al. 2017; Alves, Zrake & Fiuza 2018). The polarization pattern then becomes complex, with the possibility that the polarization becomes very low at some point (Dong,

Zhang & Giannios 2020). Such a flare would be expected to start at X-ray and VHE  $\gamma$ -ray energies upstream of the core, then propagate downstream so that it appears later at radio frequencies (Nalewajko 2017). The disruption of the helical field by the instability could lead to the disordered component inferred from the VLBA images.

## 4 VARIABILITY STUDY

Mrk 421 is known to exhibit significant flux variations from radio to VHE  $\gamma$ -rays. In this work, we quantify different aspects of variability by computing the fractional variability ( $F_{\text{var}}$ ) and the hardness ratio (HR).

### 4.1 Fractional variability

We use fractional variability ( $F_{\text{var}}$ ) as a tool to characterize the variability of the source in different wavebands. It is defined as the normalized excess variance of the flux (Vaughan et al. 2003)

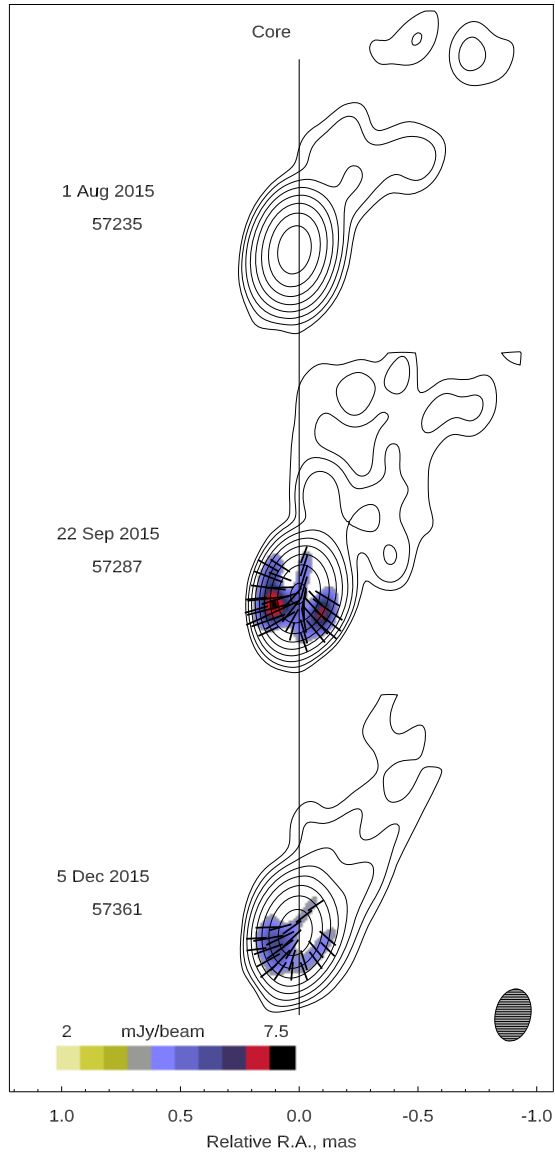
$$F_{\text{var}} = \sqrt{\frac{S^2 - \langle \sigma_{\text{err}}^2 \rangle}{\langle F_{\gamma} \rangle^2}}, \quad (1)$$

where  $S$  is the standard deviation of  $N$  flux measurements,  $\langle \sigma_{\text{err}}^2 \rangle$  is the mean squared error,  $\langle F_{\gamma} \rangle$  is the average photon flux. The uncertainty in the fractional variability ( $F_{\text{var}}$ ) has been estimated using the formalism described in Poutanen, Zdziarski & Ibragimov (2008)

$$\Delta F_{\text{var}} = \sqrt{F_{\text{var}}^2 + \text{err}(\sigma_{\text{NXS}}^2)} - F_{\text{var}}, \quad (2)$$

<sup>6</sup>The linear polarization of synchrotron radiation is proportional to the value for a uniform magnetic field,  $(1 + \alpha)/(5/3 + \alpha)$ , where  $\alpha$  is the spectral index (see classical book by Pacholczyk 1970). For typical spectral indices from 0.5 to 1.5, the uniform-field linear polarization fraction ranges from 68 per cent to 79 per cent.



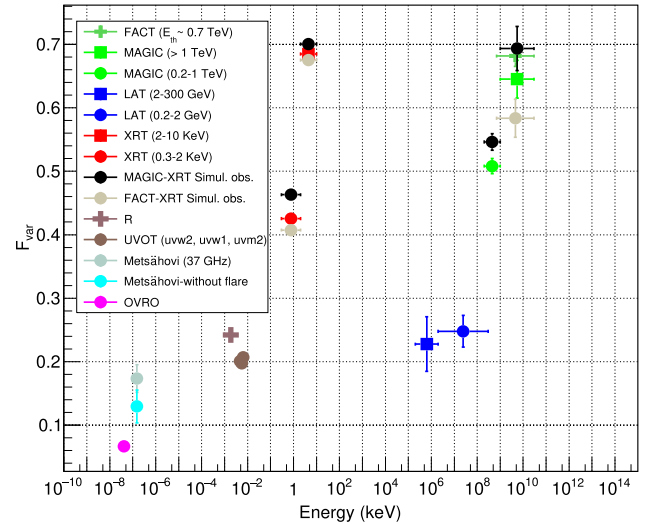


**Figure 4.** A sequence of total (contours) and polarized (colour scale) intensity images of Mrk 421 at 43 GHz obtained with the VLBA. The image is convolved with an FWHM of  $0.24 \times 0.15 \text{ mas}^2$  along  $\text{PA} = -10^\circ$ . The global total intensity peak is  $329 \text{ mJy/beam}$ , and the contours 0.35, 0.70, 1.4, etc. up to 89.6 percent of the global intensity peak. The colour scale is the polarized intensity, and the black line segments within each image show the direction of the polarization electric vector, with the length of the segment being proportional to the polarized intensity values. The black vertical line indicates the position of the core. See Section 3.2 for details.

where

$$\text{err}(\sigma_{\text{NXS}}^2) = \sqrt{\left(\sqrt{\frac{2}{N}} \cdot \frac{\langle \sigma_{\text{err}}^2 \rangle}{\langle F_\gamma \rangle}\right)^2 + \left(\sqrt{\frac{\langle \sigma_{\text{err}}^2 \rangle}{N}} \cdot \frac{2F_{\text{var}}}{\langle F_\gamma \rangle}\right)^2}. \quad (3)$$

The  $F_{\text{var}}$  computed from the multiband LCs of Fig. 2 are shown in Fig. 5. In order to ensure the use of reliable flux measurements, we only consider fluxes with relative errors (flux-error/flux) smaller than 0.5, i.e. signal-to-noise-ratio (SNR) larger than 2. This is done to avoid dealing with systematic uncertainties that could arise in very low-significance measurements, when we mostly deal with background that may not be well modelled. This cut discards only a

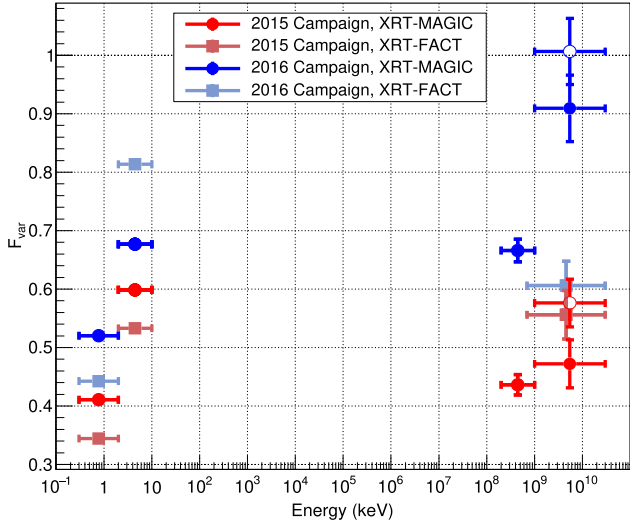


**Figure 5.** Fractional variability as a function of energy for the MWL LCs presented in Fig. 2. The horizontal error bars represent the energy bin and the vertical error bars denote the  $1\sigma$  uncertainties on the calculated fractional variability (not visible for some of the data sets). For the X-ray and VHE data, we show the results derived with all data from 2015–2016 campaigns, and also the results obtained with simultaneous X-ray (*Swift*) and VHE data (MAGIC or FACT). See Section 4.1 for details.

small fraction of the full data set (see open markers in Fig. 2). The only instrument that is substantially affected is *Swift*-BAT, whose data are not used for the variability studies reported here.

The highest variability was measured with FACT and MAGIC at energies above 1 TeV, with  $F_{\text{var}}$  close to 0.7. The MAGIC data in the energy range 0.2–1 TeV show variability at the level of 0.5. These values are about a factor of two higher than that reported during the 2009 campaign (Aleksić et al. 2015b).

In order to quantify the variability for different levels of emission, we further divide the X-ray and VHE  $\gamma$ -ray data (the two energy bands with the highest variability) into two data subsets, the 2015 campaign (MJD range 56970–57200) and the 2016 campaign (MJD range 57350–57560). For this study, we only use simultaneous X-ray and VHE  $\gamma$ -ray observations. Most of the MAGIC and *Swift*-XRT observations occurred within 2 h, but owing to the lack of intra-night variability for most of the nights, for this study we consider simultaneous observations those taken within the same night (within 0.3 d). This results in 21 pairs of XRT/MAGIC observations for the 2015 campaign subset and 24 for the 2016 campaign subset. The average X-ray flux in the 2–10 keV energy range for the first data set is  $4.1 \times 10^{-10} \text{ erg cm}^{-2} \text{ s}^{-1}$ , while it is  $2.1 \times 10^{-10} \text{ erg cm}^{-2} \text{ s}^{-1}$ , for the second one, while the 2-yr average flux is  $3.1 \times 10^{-10} \text{ erg cm}^{-2} \text{ s}^{-1}$ . Therefore, the 2016 data tell us about the activity of Mrk 421 during the lowest fluxes, while the 2015 campaign tells us about predominantly higher fluxes within the 2-yr data set considered here. For each X-ray/VHE pair, we have four flux measurements, two at X-rays (0.3–2 keV and 2–10 keV) and two at VHE (0.2–1 and >1 TeV). The  $F_{\text{var}}$  for these two subsets is reported in Fig. 6. All flux measurements have a SNR > 2.0, apart from four VHE flux measurements above 1 TeV: MJD 57195, MJD 57422, MJD 57430, and MJD 57453. These four flux values were excluded from the calculation of  $F_{\text{var}}$  above 1 TeV. The first day belongs to the 2015 campaign subset, while the other three belong to the 2016 campaign subset. All of them are related to time intervals with very low X-ray and VHE  $\gamma$ -ray flux (see Fig. 2). Because of the low number of XRT/MAGIC pairs, for com-



**Figure 6.** Fractional variability for X-rays and VHE  $\gamma$ -rays for two subsets of data, the 2015 campaign (MJD range 56970–57200) and the 2016 campaign (MJD range 57350–57560). The open markers display the  $F_{\text{var}}$  above 1 TeV for the two subsets when adding four flux measurements with SNR below 2 (see text for details).

pletteness, Fig. 6 also reports the  $F_{\text{var}}$  when the four excluded measurements above 1 TeV with SNR  $< 2$  are included in the calculations. Because of the addition of 1 + 3 flux points with very low-flux, the  $F_{\text{var}}$  increases slightly, compared to the  $F_{\text{var}}$  computed using only the measurements with SNR  $> 2$ . We repeated the same exercise using *Swift*-XRT and FACT observations taken within 0.3 d, which yielded 37 and 34 XRT/FACT pairs of observations (with flux measurements with SNR  $> 2$ ) for the 2015 and 2016 campaigns, respectively. The calculated  $F_{\text{var}}$  values for these data subsets are also shown in Fig. 6. The  $F_{\text{var}}$  calculated with the simultaneous XRT/FACT data is, in general, somewhat lower than that calculated with the XRT/MAGIC simultaneous data. The reason behind this lower variability is the requirement for SNR  $> 2$  in the VHE flux measurements by FACT, which removes simultaneous XRT/FACT pairs with X-ray fluxes that are well below the average flux for each of the two campaigns (see Fig. 2), and hence decreases the overall  $F_{\text{var}}$ . On the other hand, the  $F_{\text{var}}$  for the simultaneous XRT/FACT in the 2–10 keV band is higher than that computed with the simultaneous XRT/MAGIC data in the same energy band. This is due to the XRT/FACT data covering time intervals in 2015 December and 2016 June, which are not covered by the XRT/MAGIC data, where the 2–10 keV flux in the X-rays was several times higher (up to factor of  $\sim 5$ ) than the average 2–10 keV flux in the 2016 campaign. Two conclusions can be derived from this exercise with this data set. First, the  $F_{\text{var}}$  is higher during the 2016 campaign (lower X-ray and VHE fluxes) than during the 2015 campaign. Secondly, for the 2015 campaign, the variability is similar in keV and in TeV energies, while for the 2016 campaign, the variability in TeV is somewhat higher than in keV energies.

## 4.2 Hardness ratio

In X-rays and VHE  $\gamma$ -rays, we define the hardness ratio as the ratio of the integral flux in the high-energy (hard) band to the integral flux in the high-energy (soft) band

$$\text{HR}_{\text{TeV}} = \frac{F_{>1\text{TeV}}}{F_{0.2-1\text{TeV}}}; \quad \text{HR}_{\text{keV}} = \frac{F_{2-10\text{keV}}}{F_{0.3-2\text{keV}}},$$

where  $F_E$  is the integrated flux in the energy band  $E$ .

The upper panel of Fig. 7 shows the variation of  $\text{HR}_{\text{TeV}}$  calculated from the 2015–2016 data. During the low-flux state (MJD 57422 to 57474), the  $\text{HR}_{\text{TeV}}$  is  $\leq 0.03$ . The bottom two panels show the variation of  $\text{HR}_{\text{TeV}}$  with the integral flux in two energy bands namely 0.2–1 TeV and above 1 TeV observed with MAGIC. Additionally, the bottom panel of Fig. 7 also depicts the average and the standard deviation of data subsets of 10 observations,<sup>7</sup> binned according to their flux. This is done for a better visualization of the overall trend in the  $\text{HR}_{\text{TeV}}$ -flux plot, as well as the dispersion of the data points. In both plots, one can see a bending in the  $\text{HR}$  versus flux trend. This distortion is particularly important for the  $\text{HR}_{\text{TeV}}$  versus soft-band VHE flux (left-hand panel), where one can see a flattening in the  $\text{HR}$  beyond  $20 \times 10^{-11} \text{ ph cm}^{-2} \text{ s}^{-1}$ .

Fig. 8 shows the variation of  $\text{HR}_{\text{keV}}$  with time and flux. The  $\text{HR}_{\text{keV}}$  ranges from 0.15 to 1.05 ( $\Delta \text{HR} = 0.9$ ). The  $\text{HR}_{\text{keV}}$  observed on 2016 March 10 (MJD 57457) is the lowest reported  $\text{HR}_{\text{keV}}$  so far, which is  $0.14 \pm 0.01$ . The low-flux state mentioned in Fig. 2 from MJD 57422 to 57474 can be identified in Fig. 8 with a sustained  $\text{HR}_{\text{keV}} < 0.3$ , smaller than the lowest  $\text{HR}_{\text{keV}}$  previously reported ( $\text{HR} = 0.47$ ; Kapanadze et al. 2017) where the source was claimed to be in a historical low-flux state observed by *NuSTAR* (Baloković et al. 2016). The lower panels of Fig. 8 show the variation of the  $\text{HR}_{\text{keV}}$  with  $F_{0.3-2\text{keV}}$  and  $F_{2-10\text{keV}}$ . The hardest X-ray state can be identified on MJD 57065 with  $\text{HR}_{\text{keV}} = 1.05$ , which is the only occasion of  $\text{HR}_{\text{keV}} > 1$ , and consistent with the X-ray spectrum peaking around 10 keV, previously reported in Kapanadze et al. (2017). Apart from the high flux observed at hard X-rays by *Swift*-BAT, no exceptionally high flux is observed in any of the other energy bands. As in the bottom panel of Fig. 7, we also depict here the average and the standard deviation of the data binned in 20 observations<sup>8</sup> according to their flux, which also show the flattening in the  $\text{HR}$  versus flux relation.

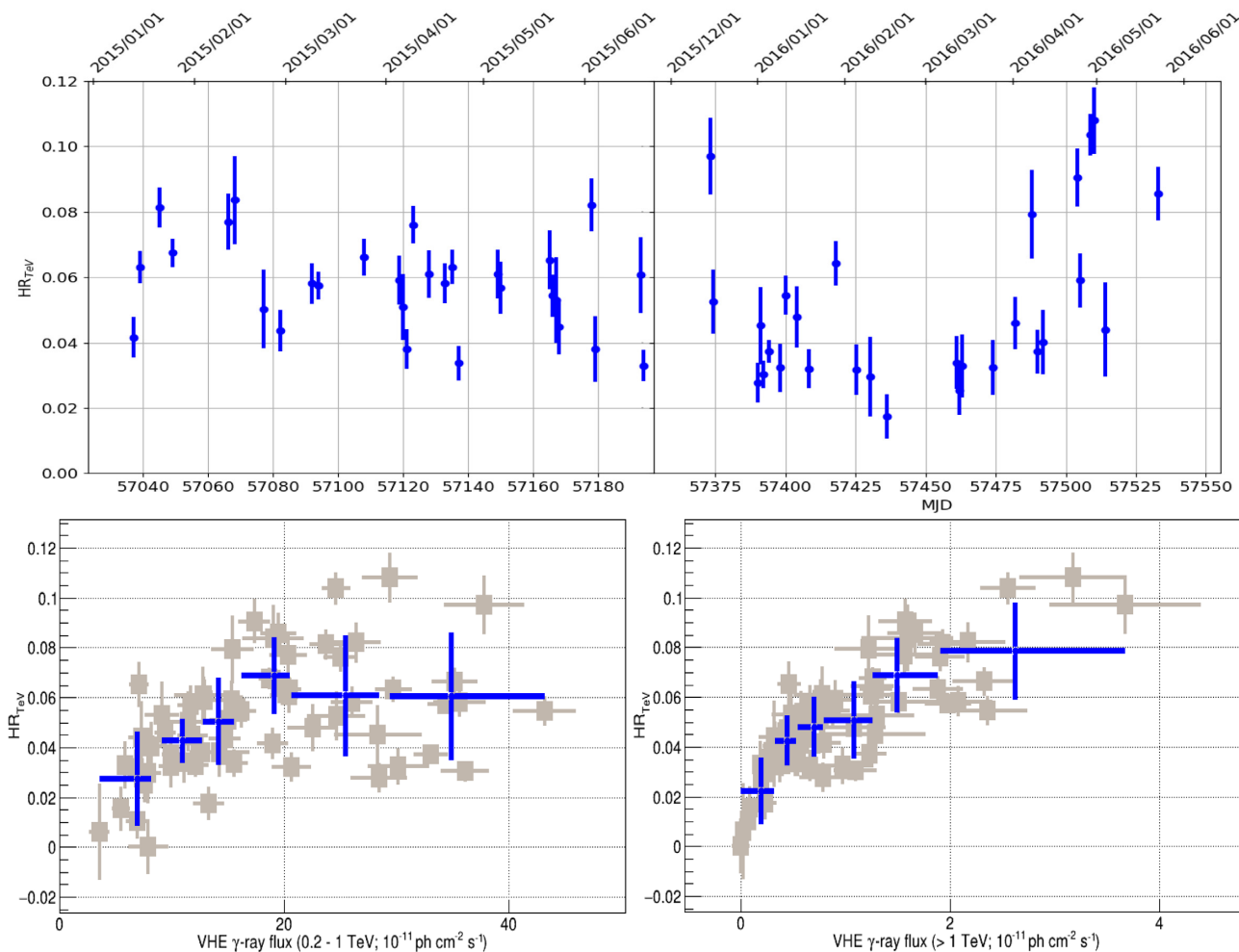
Overall, the  $\text{HR}$  versus flux plots in Figs 7 and 8 show a clear hardening-when-brightening trend in both the X-ray and VHE  $\gamma$ -ray energy ranges. However, for the highest activities, one can observe that the spectral hardening trend flattens, which is more evident when reporting the  $\text{HR}$  as a function of the flux in the lower band from each of the two energy ranges, namely 0.3–2 keV and 0.2–1 TeV. Baloković et al. (2016) had already reported a saturation in the X-ray spectral shape variations of Mrk 421 for very low and very high flux. The saturation at high fluxes appears to be consistent with what is reported here, i.e. a flattening in the X-ray spectral shape starting for 2–10 keV fluxes above  $8 \times 10^{-10} \text{ erg cm}^{-2} \text{ s}^{-1}$ . On the other hand, the flattening in the  $\text{HR}$  versus flux relation at VHE  $\gamma$ -rays has not been reported previously.

## 4.3 Appearance of a new component at hard X-ray energies

In this section, we report a characterization of the shape of the low-energy SED bump (presumably the synchrotron bump) for the time interval MJD 57422–57429 (2016 February 4–11), which is a time interval with a very low X-ray flux and a very low  $\text{HR}$  (see Figs 2 and 8). Fig. 9 shows the fluxes in the optical ( $R$  band), UV ( $W1$ ,  $M2$ ,  $W2$ ), soft X-rays (0.3–10 keV) and hard X-rays (15–50 keV) for 5 d

<sup>7</sup>The exact number of measurements for grouping the data is not relevant. For the MAGIC data we used 10 measurements, which provides sufficient event statistics, and allows one to visualize different segments of the  $\text{HR}$  versus flux relation.

<sup>8</sup>Owing to the larger number of XRT observations, in comparison with that of MAGIC observations, we decided to bin the XRT data in groups of 20, instead of the 10 used for the MAGIC data.

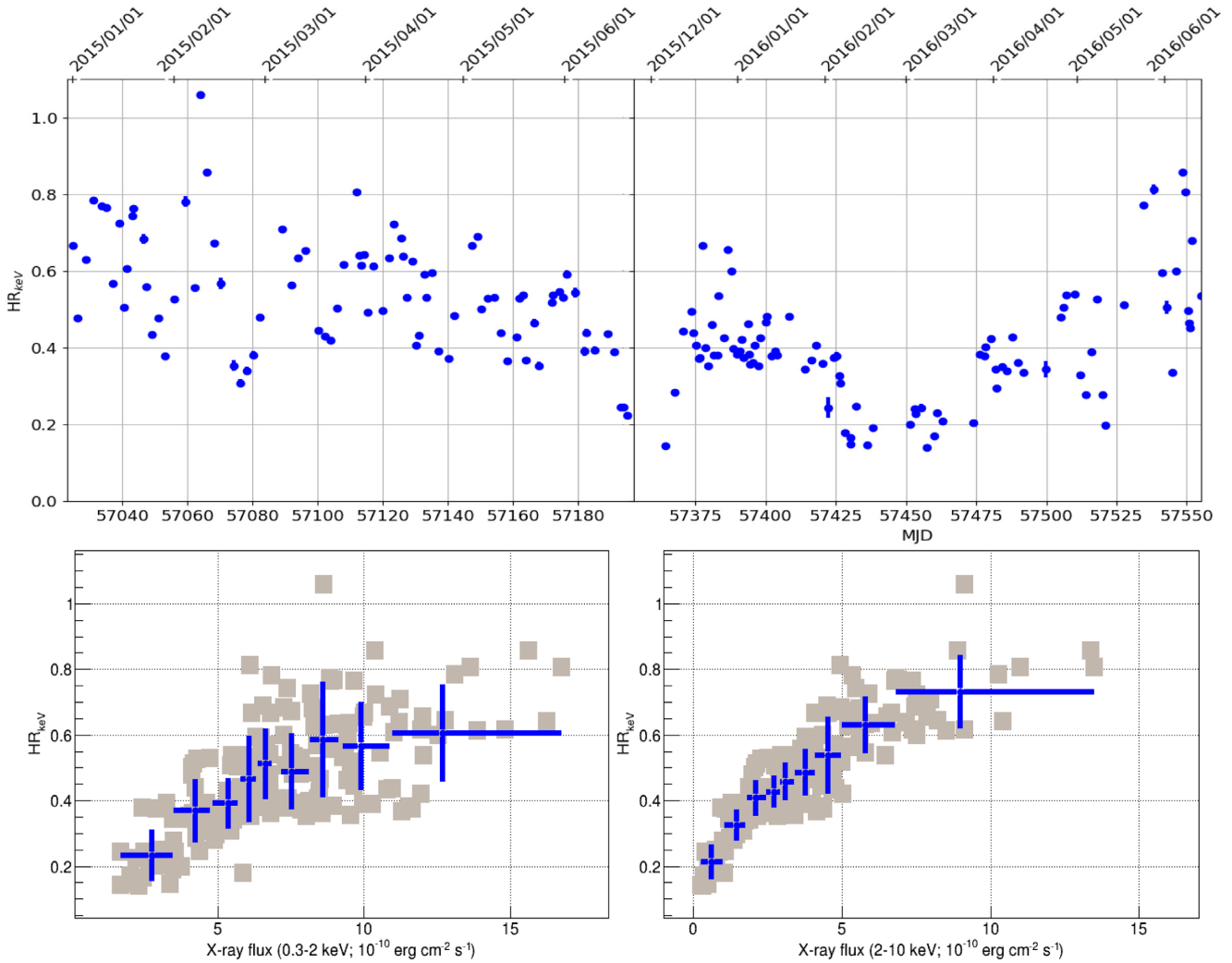


**Figure 7.** HR as a function of time (top panel) and flux (bottom panels) during 2015–2016 for two TeV energy bands, namely 0.2–1 TeV and above 1 TeV. The blue markers report the average and standard deviation of the  $HR_{TeV}$  data binned with 10 entries. See Section 4.2 for details.

(out of 7-d interval) and the related 5-d combined fluxes obtained with a standard weighted average procedure. The daily fluxes were obtained as described in Section 2. The weighted-averaged BAT fluxes (daily and combined) are converted into energy fluxes (in units of  $\text{erg cm}^{-2} \text{s}^{-1}$ ) using the prescription in Krimm et al. (2013). The hard X-ray BAT fluxes (both the daily fluxes and the 5-d combined flux) appear to be inconsistent with the simple extrapolation from the soft X-ray XRT fluxes. In order to evaluate this, we fit the 5-d combined optical to soft X-ray spectra (solid blue markers in Fig. 9) with a logparabola function  $F(\nu) = N_0(\nu/\nu_0)^{-\alpha-\beta \log_{10}(\nu/\nu_0)}$ , where  $\nu_0$  has been fixed to  $3.0 \times 10^{16}$  Hz and  $N_0$ ,  $\alpha$ , and  $\beta$  are the free parameters of the fit. Because of the very small uncertainties in the 5-d weighted average of the flux values (typically of the order of  $\sim 1$  per cent), a regular fit to the data would be affected by the small spectral distortions (wiggles) caused by small systematics in merging data sets from different instruments and with somewhat different spectral shapes. We find that we can smooth out these small spectral distortions by adding a relative flux error of 3 per cent in quadrature to the actual flux error resulting from the weighted average procedure. The resulting spectral fit, performed in the  $\nu F_\nu$  versus  $\nu$  representation, yields a  $\chi^2$  of 11.6 for 9 degrees of freedom, with the following parameter values:  $N_0$ ,  $\alpha$ , and  $\beta$  as  $(2.91 \pm 0.07) \times 10^{-10} \text{erg cm}^{-2} \text{s}^{-1}$ ,  $(9.11 \pm 0.39) \times 10^{-2}$ , and  $(1.77 \pm 0.06) \times 10^{-1}$ ,

respectively. Therefore, the logparabola function provides a good representation of the synchrotron emission averaged over 5 d, from eV to 10 keV energies. The weighted average of the 1-d BAT fluxes over these 5 days with XRT/UVOT observations is  $(1.84 \pm 0.34) \times 10^{-10} \text{erg cm}^{-2} \text{s}^{-1}$ .<sup>9</sup> As shown in Fig. 9, the extrapolation of this logparabola function to the 15–50 keV band goes well below the BAT 5-d weighted-averaged flux point (5 times the error bar). If instead of using the prescription of Krimm et al. (2013) to convert the BAT count rate to energy flux, which employs the spectral shape of the Crab Nebula in the energy range 15–50 keV (i.e. a power-law shape with index 2.15), we employ the spectral shape given by the above-mentioned log-parabola function (which in the 15–50 keV band could be approximated with power-law function with index  $\sim 2.5$ ), the BAT energy flux would be only 10 per cent lower than the one reported above (and displayed in Fig. 9), and hence it would not change the overall picture in any significant way. This observation suggests the presence of an additional component, beyond that of the

<sup>9</sup>This number is derived from the 5-d weighted average of the BAT count rate,  $(3.21 \pm 0.59) \times 10^{-3} \text{cts cm}^{-2} \text{s}^{-1}$ , and the counts-to-energy conversion stated in Krimm et al. (2013).



**Figure 8.** HR as a function of time (top panel) and flux (bottom panels) in the X-rays in two energy bands, namely 0.3–2 keV and 2–10 keV observed with *Swift*-XRT. The blue markers depict the the average and standard deviation of the HR<sub>kev</sub> data binned with 20 entries. See Section 4.2 for details.

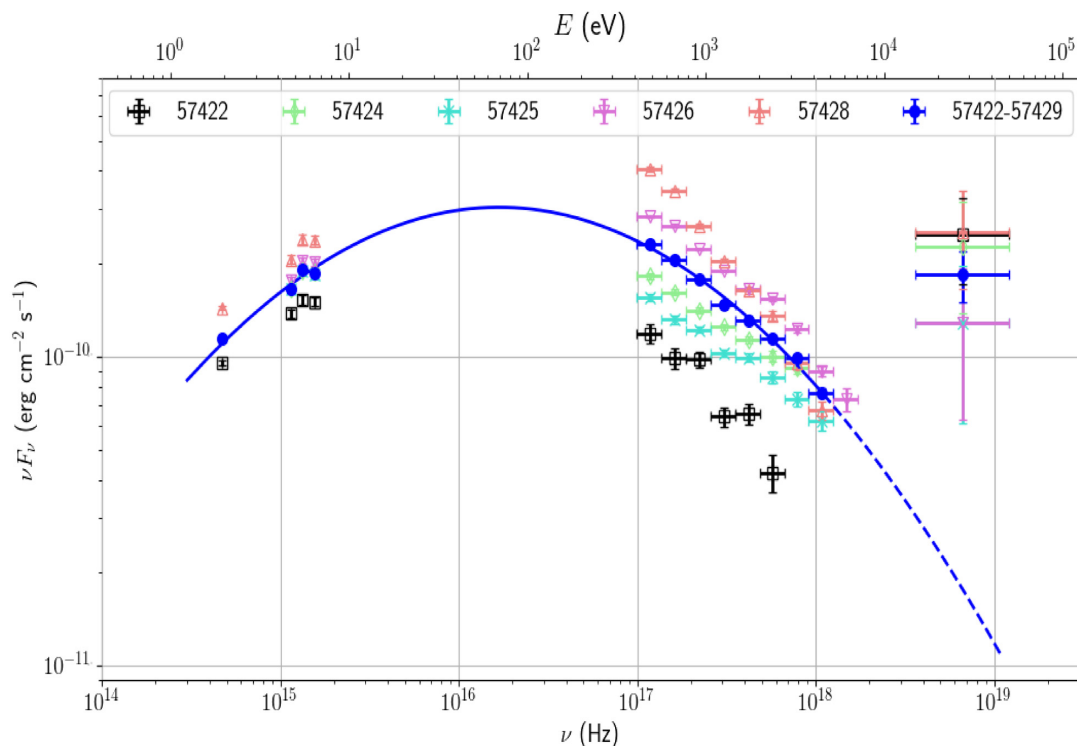
synchrotron emission of the main emitting region. See Section 7 for further discussion about it.

## 5 CORRELATION STUDY

In this section, we discuss the potential correlations between the different LCs presented in Fig. 2. The correlation between two energy bands (two LCs) is quantified using two methods: the Pearson correlation coefficient with its related  $1\sigma$  error and correlation significance (calculated from Press et al. 2002), and the discrete correlation function (DCF; Edelson & Krolik 1988). The Pearson correlation is widely used in the community, but the DCF has the advantage over the Pearson correlation that it also uses the uncertainties in the individual flux measurements, which also contribute to the dispersion of the flux values, and hence affect the actual correlation between the two LCs. The DCF and Pearson correlation between two energy bands is computed with one LC and with a second shifted in time by zero or more *time lags*. We only consider the time lags where we have more than 10 simultaneous observations. As in Section 4.1, we only consider fluxes with SNR > 2 (i.e. filled markers in Fig. 2) for the characterization of the correlations. This ensures the usage of

reliable flux measurements, and minimizes unwanted effects related to non-accounted (systematic) errors.

The calculated significance of the Pearson correlation and the uncertainties of the DCF do not necessarily relate to the actual significance of the correlation, because the correlation can be affected by the way the emission in the two bands has been sampled. A LC may have many data points in some time interval with some specific features (either real or due to fluctuations), and this may artificially boost the significance of the correlation. In order to better assess the reliability of the significance of the correlated behaviour computed with the measured LCs, we performed the same calculations using Monte Carlo simulated LCs. Each simulated LC is produced from the actual measured LC by randomly shuffling the temporal information of the flux data points, which ensures the resemblance to the actual measured LC in terms of flux values and flux uncertainties. For each correlation we want to study, we generate 10000 Monte Carlo simulated LCs, compute the DCF and Pearson correlations, and derive the 95 per cent ( $2\sigma$ ) and 99.7 per cent ( $3\sigma$ ) confidence intervals by searching for the correlation values within which 9500 and 9970 cases are confined, respectively. The simulated LCs are not correlated, by construction, and hence the DCF and Pearson correlation values that lie outside the  $3\sigma$  contours can be



**Figure 9.** Characterization of the low-energy SED bump of Mrk 421 during the time interval MJD 57422–57429 (2016 February 4–11). The five available daily observations (from optical to hard X-rays) during this 7-d time interval are reported with open markers, while the 5-d weighted-averaged fluxes are reported with blue-filled markers. The blue solid line depicts the resulting fit with a logparabola function in the energy range from 1 eV to 10 keV, and the dashed line shows the extrapolation of this logparabola function to the hard X-ray energy range. See Section 4.3 for details.

considered as statistically significant (i.e. not produced by random fluctuations).

Despite the low flux in the X-ray and VHE  $\gamma$ -ray bands in the 2015–2016 campaign, the related flux measurement uncertainties are relatively small, and the variability amplitudes in these bands are large, which allows relatively good accuracy in quantifying the correlation. These correlations are computed using simultaneous observations (performed within 0.3 d),<sup>10</sup> and can be quantified on time lags of 1 d. We note that, as shown in the VHE and X-ray LCs from Fig. 2, there are substantial flux variations on time-scales of 1–2 d, and hence it is important to be able to perform the correlation study for time lags of 1 d so that the study takes into account these relatively fast flux variations. However, when quantifying the correlation between the VHE emission measured with MAGIC and FACT and the HE emission measured with *Fermi*-LAT, the study is limited by the 3-d time bins from the *Fermi*-LAT LCs. The LAT analysis could be performed using time intervals of 1 d (instead of 3 d), but the limited sensitivity of LAT to measure Mrk 421 during non-flaring activity would lead to large flux uncertainties, as well as many time intervals without significant measurements (we used  $\text{SNR} > 2$  for this study), which would affect the correlation study.

The radio, optical and the GeV emission of Mrk 421 show a substantially lower amplitude variability (see Fig. 5) and longer time-scales for the flux variations (see Fig. 2), in comparison to the keV

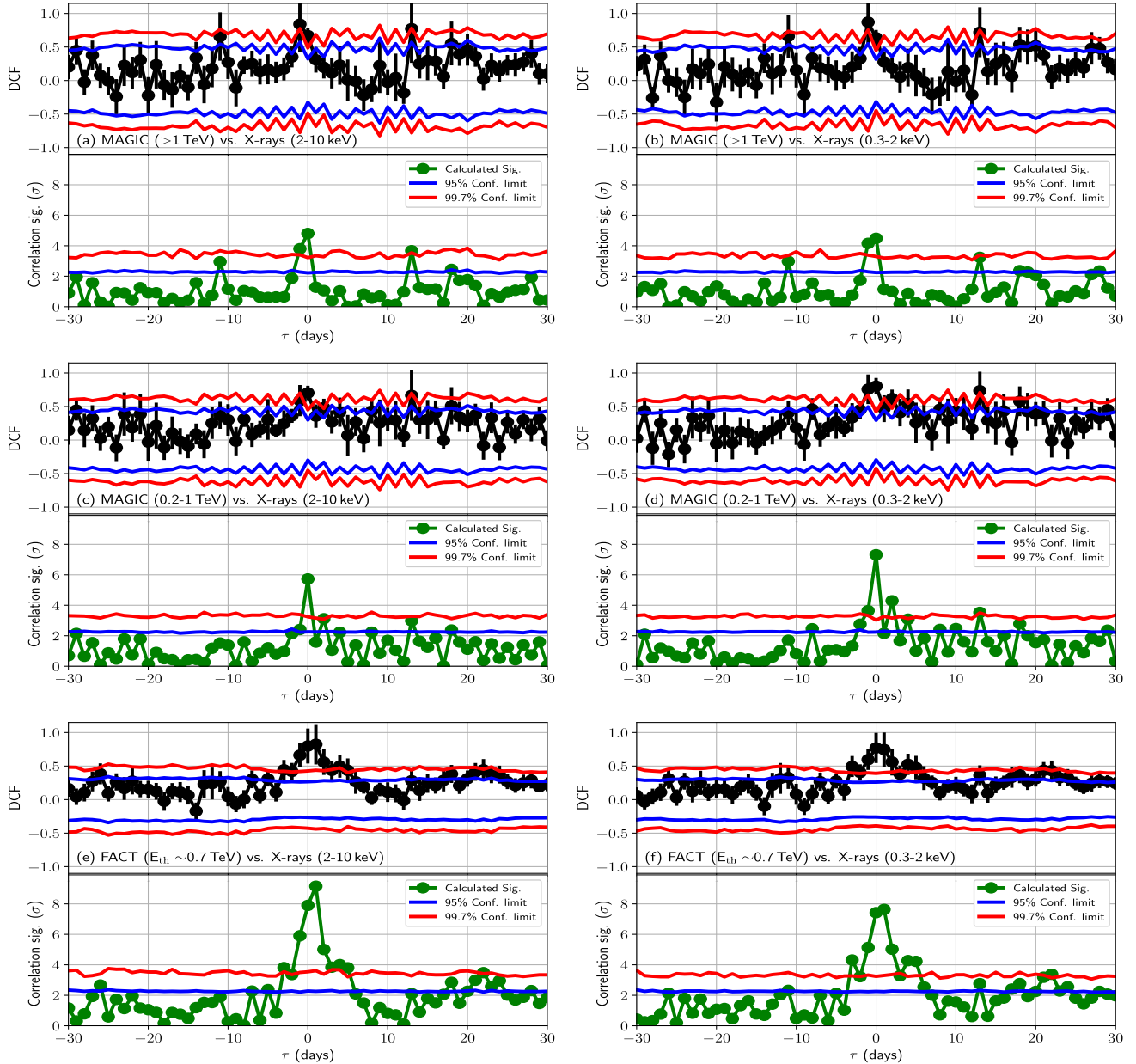
and TeV bands. Because of that, the 2015–2016 data set is not large enough to evaluate reliably the possible correlations among these energy bands. In order to better quantify the correlations among these bands, we complemented the 2015–2016 data set with data from previous years (from 2007 to 2014). Some of these data have already been reported in previous papers (Aleksić et al. 2012, 2015c; Ahnen et al. 2016; Baloković et al. 2016), while other data were specifically analysed (or collected) for this study. A description of these complementary data sets is provided in the supplementary online material (see Fig. B1 in Appendix B). Differently to what occurs for the X-ray and VHE fluxes, the lower variability and longer variability time-scales in the radio/optical/GeV emissions allow us to use the observations that are not strictly simultaneous, but only contemporaneous within a few days. For this study, we quantified the observations in temporal bins of 15 d, as done in Carnerero et al. (2017). The study is performed in the same fashion as for the simultaneous X-ray/VHE fluxes, but with time-bins of 15 d instead of 1 d.

The following subsections report the results obtained from this correlation study, and in Section 7, we provide some discussion and interpretation of these results.

### 5.1 VHE $\gamma$ -rays and X-rays

The quantification of the correlations between the VHE  $\gamma$ -rays and X-rays for a range of  $\pm 30$  d, examined in steps of 1 d, is reported in the panels (a)–(f) of Fig. 10. All of the panels report the DCF versus the time lag and the significance of the Pearson correlation versus the time lag. The panels (a)–(d) show the correlation for the

<sup>10</sup>In a few cases, there were more than one *Swift*-XRT short observations within the 0.3 d of the MAGIC or FACT observation. In these situations, we selected the X-ray observation that is closest in time to the VHE observation.



**Figure 10.** Correlation between VHE  $\gamma$ -rays and X-rays during 2015–2016 from Mrk 421 using the DCF and the Pearson correlation functions. The top and bottom blocks of each panel show the DCF and related errors, and the significance of the Pearson correlation, respectively. A positive time lag indicates a lag in the emission of the second (lower) energy band with respect to the first (higher) energy band. The blue- and red-lines indicate the 95 and 99.7 per cent confidence intervals estimated from the Monte Carlo simulations described in Section 5.

two energy bands (0.2–1 TeV and  $>1$  TeV) measured with MAGIC and the two energy bands (0.3–2 keV and 2–10 keV) observed with *Swift*-XRT, and the panels (e) and (f) show the correlations obtained using the VHE flux with  $E_{\text{th}} \sim 0.7$  TeV measured with FACT, and the two energy bands from the *Swift*-XRT.

All the panels (all the energy bands probed) show a positive correlation above  $3\sigma$  for  $\tau = 0$ , which drops quickly for negative and positive lags. While the shape of the DCF peak is similar for all the bands, the peak in the significance of the Pearson correlation is narrower when using MAGIC than when using FACT. This is produced by the rapid drop in the number of available flux–flux pairs when examining time lags different from zero (simultaneous observations), which critically affects the significance with which

a correlation is measured. In the case of MAGIC, the number of flux–flux pairs for  $\tau = 0$  is 45, while the number drops to 14 for  $\tau = -1$  d (X-ray LC shifted 1 d earlier) and 20 for  $\tau = +1$  d (X-ray LC shifted 1 d later). On the other hand, when using FACT, the number of flux–flux pairs for  $\tau = 0$  is 71, and the number is 71 (72) for  $\tau = -1$  (+1) d, which ensures the same resolution to evaluate the correlation for these different time lags. Table 2 reports the DCF and the Pearson correlation, with their related  $1\sigma$  uncertainties, and the significance of the Pearson correlation for  $\tau = 0$  (simultaneous observations). This table also reports the normalized slopes that relates the VHE  $\gamma$ -ray and the X-ray fluxes in the various energy bands (see Fig. C1 in the supplementary online material Appendix C).

**Table 2.** Correlation results for the X-rays and VHE  $\gamma$ -rays during 2015–2016 campaign. This table reports the correlation results for  $\tau = 0$  (simultaneous emission). The discrete correlation function (DCF) and the corresponding errors are calculated following Edelson & Krolik (1988). The  $1\sigma$  Pearson correlation errors are calculated following Press et al. (2002). The slopes of fit for the unbinned (grey markers) and binned data (blue markers), presented in Fig. C1, are normalized with the average flux of the bands under consideration. See Section 5.1 for details.

| LC 1                               | LC 2           | DCF             | Pearson Corr. Coeff. ( $\sigma$ ) | Normalized slope of fit |                 |
|------------------------------------|----------------|-----------------|-----------------------------------|-------------------------|-----------------|
|                                    |                |                 |                                   | Unbinned                | Binned          |
| MAGIC; 0.2–1 TeV                   | XRT; 0.3–2 keV | $0.80 \pm 0.12$ | $0.81^{+0.05}_{-0.06}$ (7.3)      | $0.86 \pm 0.02$         | $0.96 \pm 0.30$ |
| MAGIC; 0.2–1 TeV                   | XRT; 2–10 keV  | $0.70 \pm 0.1$  | $0.71^{+0.07}_{-0.08}$ (5.7)      | $0.56 \pm 0.02$         | $0.60 \pm 0.21$ |
| MAGIC; >1.0 TeV                    | XRT; 0.3–2 keV | $0.64 \pm 0.12$ | $0.62^{+0.1}_{-0.11}$ (4.5)       | $0.96 \pm 0.05$         | $1.15 \pm 0.38$ |
| MAGIC; >1.0 TeV                    | XRT; 2–10 keV  | $0.67 \pm 0.12$ | $0.65^{+0.08}_{-0.10}$ (4.8)      | $0.73 \pm 0.04$         | $0.82 \pm 0.25$ |
| FACT; $E_{\text{th}} \sim 0.7$ TeV | XRT; 0.3–2 keV | $0.76 \pm 0.22$ | $0.72^{+0.05}_{-0.06}$ (7.4)      | $1.00 \pm 0.05$         | $1.20 \pm 0.53$ |
| FACT; $E_{\text{th}} \sim 0.7$ TeV | XRT; 2–10 keV  | $0.80 \pm 0.26$ | $0.74^{+0.05}_{-0.06}$ (7.9)      | $0.72 \pm 0.04$         | $0.80 \pm 0.30$ |

## 5.2 VHE $\gamma$ -rays and HE $\gamma$ -rays

In this study, the daily LCs from MAGIC and FACT were prepared to match the three-day cadence of the HE  $\gamma$ -ray LC from *Fermi*-LAT. The DCF and Pearson correlation values for the various combinations of bands from MAGIC, FACT, and *Fermi*-LAT are reported in Table 3 for  $\tau = 0$ . We do not find any significant correlation between the MAGIC and the LAT energy bands. In this case, the ability to see correlation is limited by the statistical uncertainties in the LAT fluxes (for 3-d time intervals) and by the low number of VHE–HE pairs with fluxes that have a SNR > 2, which are 37 and 33 when comparing the MAGIC bands 0.2–1 TeV and above 1 TeV with the LAT flux above 2 GeV, respectively.

Despite the larger flux uncertainties from FACT in comparison with those from MAGIC, the number of FACT-LAT data pairs (with SNR > 2) is about twice as large as MAGIC-LAT: 85 and 71 for the LAT bands 0.2–2 GeV and 2–300 GeV, respectively. This is due to the larger sampling and larger temporal coverage from FACT with respect to that from MAGIC. This includes the additional temporal coverage provided by FACT in 2014 November–December and 2016 June, when Mrk 421 showed an enhanced VHE flux, which appears to have a counterpart in the GeV range (see Fig. 2). Because of the low fractional variability in the GeV range, the additional temporal coverage provided by FACT proved beneficial for accumulating valid information for the understanding of this correlated behaviour. We find that the Pearson correlation between the FACT VHE flux ( $E_{\text{th}} \sim 0.7$  TeV) and the LAT HE flux above 2 GeV is about 0.5 with a significance of almost  $5\sigma$  (with a DCF =  $0.88 \pm 0.35$ ). The correlation, however, is not significant when using the LAT band 0.2–2 GeV, which yields only a Pearson correlation coefficient of 0.3 with a significance of  $3\sigma$  (with a DCF =  $0.48 \pm 0.17$ ). In order to better evaluate the correlation between the VHE FACT fluxes and LAT, we decided to complement the FACT data set with the fluxes obtained during the previous years, altogether enlarging the data set to cover the period from 2012 December to 2016 June (see the supplementary online material in Appendix B). The results obtained for this data set of relatively continuous coverage during 3.5 yr (apart from bad weather and periods of no visibility due to the Sun) are reported in the last two rows of Table 3. In this case, the number of VHE–HE data pairs (with SNR > 2) is 140 and 118 for the LAT bands 0.2–2 and 2–300 GeV, respectively. The results are similar to those obtained for the time period from 2014 November to 2016 June. The correlation is not significant for the band 0.2–2 GeV, which yields a Pearson correlation coefficient value of 0.2 with a significance of  $2.6\sigma$  (DCF =  $0.26 \pm 0.15$ ), while it is marginally significant for the fluxes above 2 GeV, which a Pearson correlation coefficient of 0.4 with a significance of  $4.7\sigma$  (DCF =  $0.61 \pm 0.24$ ).

We also studied the magnitude of the correlation for different time lags, for a range of  $\pm 30$  d in 3-d steps, including a toy MC to evaluate the  $2\sigma$  and  $3\sigma$  confidence intervals. The results are shown in Fig. 11, leading to the conclusion that the correlation is only (marginally) significant for the fluxes above 2 GeV and for  $\tau = 0$ . The flux–flux correlation plots for the FACT VHE fluxes ( $E_{\text{th}} \sim 0.7$  TeV) and the two *Fermi*-LAT energy bands are shown in the supplementary online material (Fig. C2 in Appendix C).

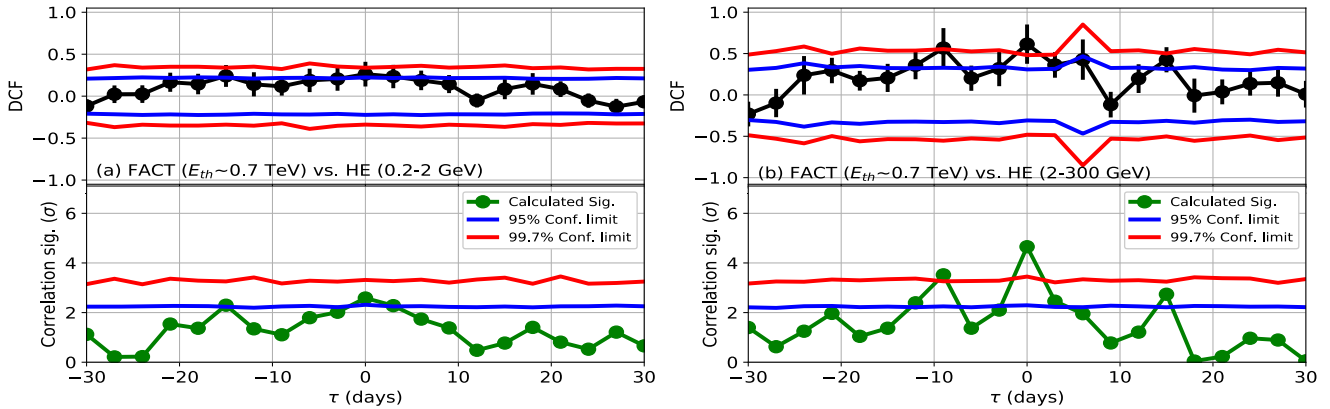
A similar correlation had been previously reported in Bartoli et al. (2016) for VHE  $\gamma$ -rays measured with the ARGO-YBJ at TeV energies and the HE  $\gamma$ -rays measured with *Fermi*-LAT above 0.3 GeV. They quantified the correlation with the DCF analysis, obtaining a correlation for  $\tau = 0$  with DCF =  $0.61 \pm 0.22$ . The main differences with respect to the result presented here are the somewhat different energy bands involved, and the very different temporal scales used for these two correlation studies. While Bartoli et al. (2016) used data from mid 2008 to 2013 in 30-d bins, we performed the study with data from the end of 2012 to mid 2016 in time bins of 3 d. Additionally, in this paper, we also quantify the correlation using the Pearson correlation function and Monte Carlo simulations to better evaluate the reliability of the significance of the correlation.

## 5.3 HE $\gamma$ -rays and optical band

The panel (a) of Fig. 12 shows the quantification of the correlation between the HE fluxes in the 0.3–300 GeV energy band measured with *Fermi*-LAT and the optical fluxes in the *R* band, as measured by a large number of instruments over a time range spanning from 2007 to 2016 (see the supplementary online material in Appendix B). The correlation is computed for a time lag range of  $\pm 200$  d in steps of 15 d, with the HE and *R*-band fluxes computed in 15-d temporal bins. The plot shows a correlation peak of about 60 d FWHM, and centred at  $\tau = 0$ . As reported in Table 4, the Pearson correlation coefficient is  $0.72 \pm 0.04$ , with a correlation significance of about  $11\sigma$ , and the DCF is  $0.74 \pm 0.17$ . Because of the 15-d fluxes and 15-d time-steps, the resolution with which we can estimate the time lag with the highest correlation is somewhat limited. Following the prescription from Peterson et al. (1998), we estimate the time lag with the highest correlation is  $3^{+5}_{-9}$  d (see the supplementary online material in Appendix D for details), which is perfectly consistent with no time lag, suggesting that the emission in these two energy bands is simultaneous. Panel (a) of Fig. C3 shows that the relation between the GeV and *R*-band fluxes can be approximated by a linear function with a normalized slope of 0.6–0.7 (see Table 4).

**Table 3.** Correlation results for HE and VHE  $\gamma$ -rays for  $\tau = 0$  (simultaneous emission) for 2015–2016 campaign, except for the last two rows, where the correlation results are computed using the data from 2012 December to 2016 June (2013–2016). See Section 5.2 for details.

| LC 1                                   | LC 2                      | DCF              | Pearson Corr. Coeff. ( $\sigma$ ) | Normalized slope of fit |                 |
|--|---------------------------|------------------|-----------------------------------|-------------------------|-----------------|
|  |                           |                  |                                   | Unbinned                | Binned          |
| MAGIC; 0.2–1 TeV                       | LAT; 0.2–2 GeV            | $0.57 \pm 0.21$  | $0.37^{+0.11}_{-0.12}$ (2.9)      | $3.28 \pm 0.74$         | $0.67 \pm 0.59$ |
| MAGIC; 0.2–1 TeV                       | LAT; 2–300 GeV            | $0.86 \pm 0.35$  | $0.41^{+0.13}_{-0.15}$ (2.5)      | $2.84 \pm 1.03$         | $0.39 \pm 0.56$ |
| MAGIC; >1 TeV                          | LAT; 0.2–2 GeV            | $0.42 \pm 0.24$  | $0.26^{+0.14}_{-0.15}$ (1.7)      | $5.30 \pm 1.71$         | $0.41 \pm 1.09$ |
| MAGIC; >1 TeV                          | LAT; 2–300 GeV            | $-0.03 \pm 0.34$ | $-0.01^{+0.18}_{-0.18}$ (0.1)     | –                       | –               |
| FACT; $E_{th} \sim 0.7$ TeV            | LAT; 0.2–2 GeV            | $0.48 \pm 0.17$  | $0.32^{+0.09}_{-0.10}$ (3.0)      | $4.98 \pm 1.04$         | $0.64 \pm 0.55$ |
| FACT; $E_{th} \sim 0.7$ TeV            | LAT; 2–300 GeV            | $0.88 \pm 0.35$  | $0.53^{+0.08}_{-0.09}$ (4.9)      | $3.29 \pm 0.75$         | $0.71 \pm 0.52$ |
| FACT; $E_{th} \sim 0.7$ TeV; 2013–2016 | LAT; 0.2–2 GeV; 2013–2016 | $0.26 \pm 0.15$  | $0.22^{+0.08}_{-0.08}$ (2.6)      | $5.67 \pm 0.92$         | $0.84 \pm 0.40$ |
| FACT; $E_{th} \sim 0.7$ TeV; 2013–2016 | LAT; 2–300 GeV; 2013–2016 | $0.61 \pm 0.24$  | $0.41^{+0.07}_{-0.08}$ (4.7)      | $3.69 \pm 0.62$         | $0.65 \pm 0.48$ |

**Figure 11.** Correlation between VHE  $\gamma$ -rays and HE  $\gamma$ -rays using fluxes for 3-d time intervals from 2012 December to 2016 June. See caption of Fig. 10 for further explanations about the panel contents.

A positive correlation between the multi-year *Fermi*-LAT  $\gamma$ -ray flux and the optical *R*-band flux had been first reported in fig. 25 of Carnerero et al. (2017). The DCF from that study, also performed in steps of 15 d, shows a broad peak of many tens of days around  $\tau = 0$ , with the highest DCF value being around 0.4, for the multiyear data set. However, the significance of the correlation was not quantified in Carnerero et al. (2017). In this paper, we show that a DCF of 0.4 is not necessarily related to a significant ( $>3\sigma$ ) correlation. We also show that the *Fermi*-LAT  $\gamma$ -ray flux and optical *R*-band emissions are positively correlated with a DCF of about 0.8, and with a very high significance ( $>12\sigma$ ), hence confirming and further strengthening the claims made in Carnerero et al. (2017).

#### 5.4 HE $\gamma$ -rays and radio band

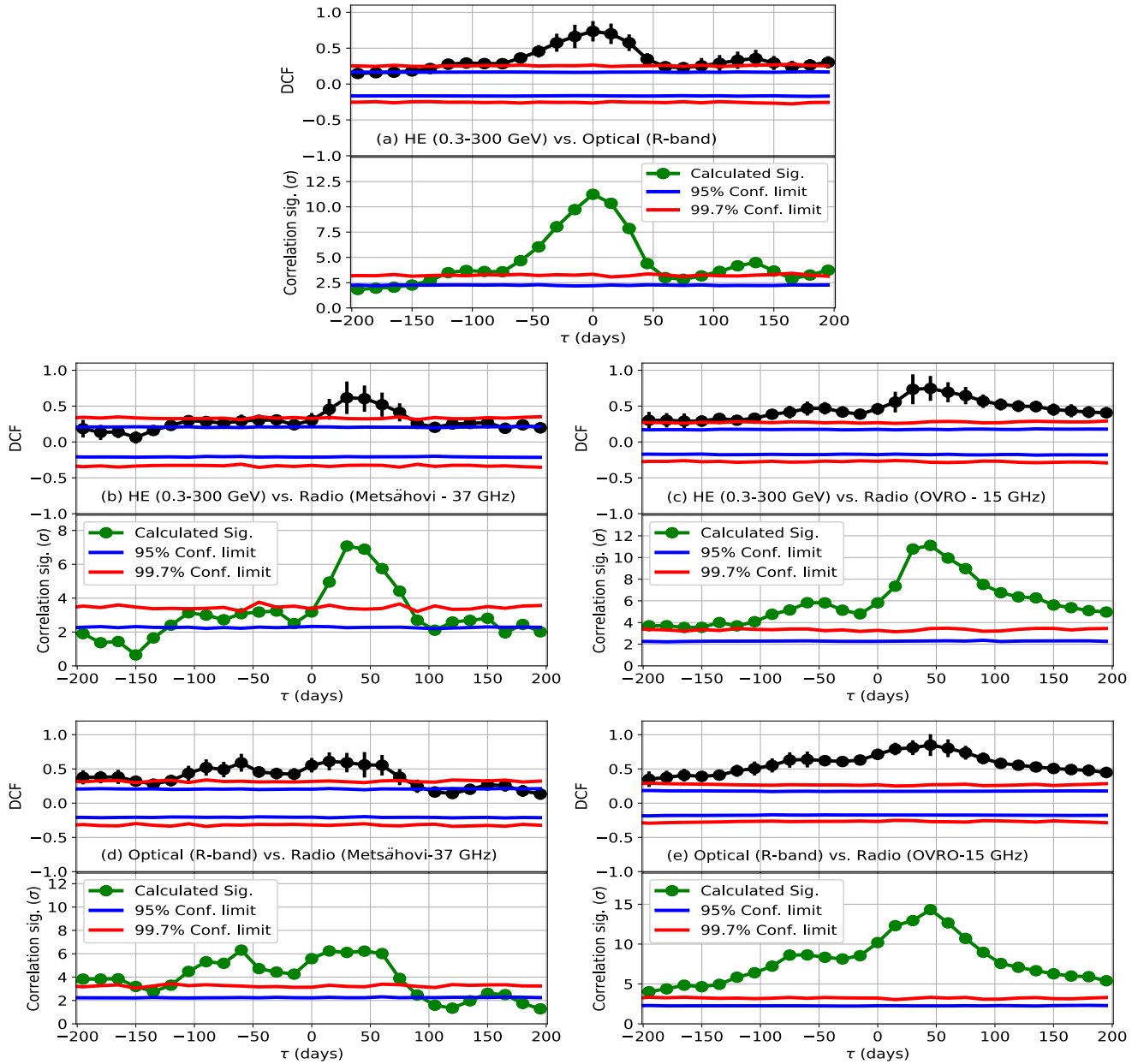
Panels (b) and (c) of Fig. 12 show the correlation between the HE  $\gamma$ -rays in the 0.3–300 GeV energy band, measured with *Fermi*-LAT, and the 37 and 15 GHz radio flux densities, as measured with Metsähovi and OVRO over a time range spanning from 2007 to 2016 (see the supplementary online material, Fig. B1 in Appendix B). In both cases, one finds a positive correlation characterized by a wide peak, of about 60 days, centred at  $\tau \sim 45$  d.

The supplementary online material (Appendix D) reports an estimation of the time lag between these energy bands, obtained with the prescriptions from Peterson et al. (1998). We estimate that the time lag between the HE  $\gamma$ -rays and the 37 GHz radio flux is  $41^{+10}_{-11}$  d, while for the 15 GHz radio flux it is  $47^{+5}_{-9}$  d. The panels (b) and (c) of Fig. C3 show that, for a time shift of 45 d, the relation

between the GeV and the radio fluxes can be approximated by a linear function. As reported in Table 4, for a time shift of 45 d, the Pearson correlation coefficient is about 0.5–0.7, with a correlation significance of  $7\sigma$  for Metsähovi and  $11\sigma$  for OVRO, and the DCF is  $0.6 \pm 0.2$  and  $0.7 \pm 0.2$ , respectively, for Metsähovi and OVRO. Therefore, the correlation between these bands is robustly measured.

The radio emission of blazars has been found to be correlated to the  $\gamma$ -ray emission using EGRET data (e.g. Jorstad et al. 2001; Lähteenmäki & Valtaoja 2003) and *Fermi*-LAT data (e.g. Ackermann et al. 2011; León-Tavares et al. 2011), very often with the radio emission delayed with respect to the  $\gamma$ -ray emission by tens and hundreds of days (e.g. Ramakrishnan et al. 2015). As for the specific case of Mrk 421, Max-Moerbeck et al. (2014) had first reported a positive correlation between  $\gamma$ -rays from *Fermi*-LAT and radio from OVRO for a time lag that, using the recipe from Peterson et al. (1998), was estimated to be  $40 \pm 9$  d. However, the correlation reported in that paper was only at the level of  $2.6\sigma$  ( $p$ -value of 0.0104), quantified with a dedicated MC simulation, and strongly affected by the large  $\gamma$ -ray and radio flares from 2012 July and September, respectively (Max-Moerbeck et al. 2014). Hovatta et al. (2015), which considered also data from another (smaller) radio flare in 2013, reported a positive correlation for a range of  $\tau$  of about 40–70 d, but did not assign any significance to this measurement. In the study reported upon here our dedicated MC simulations show that the significance of the correlation between *Fermi*-LAT and OVRO is well above the  $3\sigma$  contour, and, when using the prescription from Press et al. (2002) to quantify it, we obtained  $11\sigma$ . Moreover, because of a data set twice as large as the data used in Hovatta et al. (2015), it





**Figure 12.** Correlation between the HE  $\gamma$ -rays, optical ( $R$  band) and two radio bands using fluxes for 15-d time intervals from 2007 to 2016. See caption of Fig. 10 for further explanations about the panel contents.

**Table 4.** Correlation results between the low-variability radiation components of Mrk 421. The long-term (2007–2016) data have been used for the correlation results of the radio, optical, and HE  $\gamma$ -rays. The column time-shift reports the temporal shift applied to the second LC with respect to the first one. This time shift corresponds to the time lag with the highest DCF in Fig. 12. The various columns report the same quantities as in Table 2. The slopes of fit for the unbinned (grey markers) and binned data (blue markers), presented in Fig. C3, are normalized with the average flux in the corresponding bands. See Section 5 for details.

| LC 1                                | LC 2                      | Time-shift (d) | DCF             | Pearson Corr. Coeff. ( $\sigma$ ) | Normalized slope of fit |                 |
|-------------------------------------|---------------------------|----------------|-----------------|-----------------------------------|-------------------------|-----------------|
|                                     |                           |                |                 |                                   | Unbinned                | Binned          |
| HE $\gamma$ -ray (LAT; 0.3–300 GeV) | Optical ( $R$ band)       | 0              | $0.74 \pm 0.14$ | $0.72^{+0.04}_{-0.04}$ (11.2)     | $0.66 \pm 0.03$         | $0.63 \pm 0.21$ |
| HE $\gamma$ -ray (LAT; 0.3–300 GeV) | Radio (Metsähovi; 37 GHz) | 45             | $0.60 \pm 0.18$ | $0.53^{+0.06}_{-0.06}$ (6.9)      | $2.63 \pm 0.17$         | $0.79 \pm 0.33$ |
| HE $\gamma$ -ray (LAT; 0.3–300 GeV) | Radio (OVRO; 15 GHz)      | 45             | $0.75 \pm 0.17$ | $0.72^{+0.04}_{-0.04}$ (11.1)     | $1.53 \pm 0.06$         | $1.32 \pm 0.41$ |
| Optical ( $R$ band)                 | Radio (Metsähovi; 37 GHz) | 45             | $0.56 \pm 0.18$ | $0.50^{+0.06}_{-0.07}$ (6.2)      | $2.93 \pm 0.17$         | $0.83 \pm 0.33$ |
| Optical ( $R$ band)                 | Radio (OVRO; 15 GHz)      | 45             | $0.85 \pm 0.16$ | $0.84^{+0.02}_{-0.03}$ (14.3)     | $2.82 \pm 0.02$         | $2.0 \pm 0.35$  |

is not dominated by the large  $\gamma$ -ray and radio flares in 2012. In order to better understand this correlation, we removed this large  $\gamma$ -ray and radio flare from 2012 by generously excluding the time interval MJD 56138–56273 from both the  $\gamma$ -ray and radio LCs, and repeated the test. We obtained a positive correlation with a significance of  $9\sigma$ , with a peak that extends over a range of about 60 d, centred at  $\tau \sim 45$  d. Therefore, we confirm and further strengthen the correlation reported in Max-Moerbeck et al. (2014), stating with reliability that this is an intrinsic characteristic in the multi-year emission of Mrk 421, and not a particularity of a rare flaring activity.

### 5.5 Optical band and radio band

Panels (d) and (e) of Fig. 12 show the correlation between the flux in the optical  $R$ -band from GASP–WEBT and the 37 and 15 GHz radio flux densities measured with Metsähovi and OVRO, respectively. In the case of OVRO, one finds that the highest correlation occurs for  $\tau \sim 45$  d, and it is characterized by a wide peak that resembles the one obtained for the GeV versus 15-GHz band, as depicted in the panel (c) of Fig. 12. In the case of Metsähovi, the DCF shows much wider structure, without any clear peak, but with high DCF values also around  $\tau \sim 45$  d. As done above, we followed the prescriptions of Peterson et al. (1998) to estimate the time lag between these bands (see the supplementary online material in Appendix D). We obtained  $\tau = 33^{+19}_{-11}$  d for the  $R$  band and the 37 GHz radio flux, and  $\tau = 39^{+6}_{-2}$  d for the  $R$  band and the 15 GHz radio flux. The panels (d) and (e) of Fig. C3 show that, for a time shift of 45 d, the relation between the  $R$  band and the radio fluxes can be approximated by a linear function. As reported in Table 4, for a time shift of 45 d, the Pearson correlation coefficient is 0.5 and 0.8, with a correlation significance of  $6\sigma$  and  $14\sigma$  for Metsähovi and for OVRO, respectively. The DCF is about 0.6 and 0.9 for them, hence indicating a very clear and significant correlated behaviour for these two bands.

## 6 DETERMINATION OF THE MWL FLUX DISTRIBUTIONS USING THE FLUX PROFILE METHOD

The emission mechanisms in accreting sources like active Galactic nuclei and X-ray binaries have been found to be consistent with stochastic processes (McHardy et al. 2006; Chatterjee et al. 2012; Nakagawa & Mori 2013; Sobolewska et al. 2014). For a linear stochastic process, one expects a Gaussian (G) distribution of fluxes. However, a lognormal (LN) distribution was found to be preferred (over a G one) in the long-term X-ray LC of the blazar BL Lac where the average amplitude variability was found to be proportional to the flux (Giebels & Degrangé 2009). The Galactic X-ray binary Cygnus X-1 also showed such features in X-rays (Uttley & McHardy 2001). Since then, LN behaviour has been observed in several blazars primarily in optical/near-IR, X-ray, and  $\gamma$ -ray wavelengths (Sinha et al. 2016, 2017; Romoli et al. 2018; Valverde et al. 2020). The presence of lognormality indicates an underlying multiplicative process in blazars contrary to the additive physical process. It has been suggested that such multiplicative processes originate in the accretion disc (Lyubarskii 1997; Uttley, McHardy & Vaughan 2005; McHardy 2010); however, Narayan & Piran (2012) strongly argue the variability to originate within the jet. In case of Mrk 421, using data from 1991 to 2008, mostly from the old generation of VHE ground-based  $\gamma$ -ray instruments, the flux distribution above 1 TeV was found to be consistent with a combination of a G and a LN distribution (Tluczykont et al. 2010). The improvement of the sensitivity of the present-day telescopes over last few years now provides us with the

opportunity to study the flux states with a much better accuracy, and a minimum energy as low as 0.2 TeV, where the minimum energy is always above the analysis energy threshold.

Here, we report on a detailed study of the flux distributions observed in different wavebands, from radio to VHE  $\gamma$ -rays, using the data from the 2015–2016 campaigns, together with previously published MWL data from the 2007, 2008, 2009, 2010, and 2013 campaigns (Aleksić et al. 2012, 2015c; Ahnen et al. 2016; Baloković et al. 2016), published multiyear optical  $R$ -band data (Carnerero et al. 2017), and unpublished data at radio (OVRO, Metsähovi), hard X-ray (*Swift*-BAT), and GeV  $\gamma$ -rays (*Fermi*-LAT). The multiyear LCs used for this study are reported in the supplementary online material (Appendix B). The two large VHE  $\gamma$ -ray flaring episodes of Mrk 421 in 2010 February (Abeysekara et al. 2020) and 2013 April (Acciari et al. 2020) have been excluded to avoid large biases in the distributions. During these two time intervals of about 1 week, Mrk 421 showed a VHE activity larger than 20 times its typical flux and, because of the exceptional activity, the number of X-ray and VHE observations were also increased by more than one order of magnitude with respect to the typical temporal coverage during the regular MWL campaigns. The inclusion of these two periods would create a large structure in the X-ray and VHE  $\gamma$ -ray distributions at fluxes of about ten times the typical ones, and would hamper any fit with a smooth function, like G or LN. The data used here relate to time intervals when Mrk 421 showed typical or low activity (e.g. during years 2007, 2009, 2015, and 2016) or somewhat enhanced activity, as it happened during year 2008 and 2 weeks in 2010 March. Because of the high activity in 2008, some of the X-ray and VHE observations came from dedicated ToOs, which increased somewhat the number of observations that would not have been performed in the absence of high activity. The accurate identification of the ‘extra observations’ is complicated because the dynamic scheduling that was being used at the time, and the fact that these observations occurred 12 yr ago. We note that the inclusion of the 2008 data introduces a bias towards high fluxes in the X-ray and VHE flux distributions (because of the additional observations during a period of high activity). However, in the supplementary online material (Appendix B), we show that the results about the shape of the distribution do not change in a substantial way, even when removing completely the data related to the entire year 2008.

In order to study the general shape of the flux-distribution and estimate the most-probable flux state, we developed a method largely inspired by the kernel density estimation (KDE), dubbed ‘flux profile construction’. We treat each flux measurement, in a given energy band, as a G with the flux values as the mean and the flux uncertainty as the standard deviation. The amplitude is inversely proportional to the standard deviation, so that the area under each individual G is unity. A ‘flux profile’ for a certain energy band is constructed by adding all individual flux measurements in that band. In order to determine the preferred shape of a flux profile, we fit the flux profile starting from the minimum flux with the following functions:

(1) Gaussian:  $G(x; \mu_G, \sigma_G) = \frac{N_G}{\sigma_G \sqrt{2\pi}} e^{-\frac{(x-\mu_G)^2}{2\sigma_G^2}}$ , and (2) lognormal:

$LN(x; \mu_{LN}, \sigma_{LN}) = \frac{N_{LN}}{x \sigma_{LN} \sqrt{2\pi}} e^{-\frac{(\log(x)-\mu_{LN})^2}{2\sigma_{LN}^2}}$ , where  $N_G$  and  $N_{LN}$  are the normalization constants for the G and LN profiles, respectively, and  $\mu_i$  and  $\sigma_i$  are the mean and standard deviation of the fitted profiles ( $i = G$  and LN for G and LN, respectively). We used the LMFIT<sup>11</sup> method to estimate the best fit and the goodness of

<sup>11</sup><https://lmfit.github.io/lmfit-py/fitting.html>

fit. Here, the goodness of fit is given by the parameter `redchi`, which is calculated from the ratio of the sum of the residuals to the degrees of freedom. A better fit is chosen based on the ratio of the corresponding `redchi` parameters named  $R_{LN}^G$ . A LN profile for the flux distribution is preferred if  $R_{LN}^G > 1$ . The chance probability ( $p$ ), based on toy Monte Carlo, indicates the probability of wrongly reconstructing a LN (G) distribution as a G (LN). The details and justification of this method can be found in the supplementary online material (Appendix E).

The flux profiles from radio to VHE  $\gamma$ -rays, along with the fits with the G and LN functions, are shown in Fig. 13. The fluxes were scaled with the average flux in the respective energy bands. The fit parameters are presented in Table 5. The flux profiles for X-ray observations in the 0.3–2 keV and 2–10 keV energy bands show spikes. This is due to the very high SNR (average SNR above 60), which makes the available number of flux measurements insufficient to produce a smooth convolved distribution. Despite this caveat, our simulations show that the number of measurements is sufficient to characterize the shape of the distribution, as well as to marginally distinguish between a G and LN function. Our findings suggest that the LN is preferred over G for emissions in the VHE and HE  $\gamma$ -rays, hard X-rays in the 15–50 keV and optical band. The hard X-rays in the 15–50 keV shows a preference for a LN profile, but with a chance probability ( $p$ ) of only 0.16 (due to the large flux uncertainties), these results are not conclusive. The 37 GHz radio band shows a clear preference for the G, while the flux profile for the X-rays in the 0.3–2 and 2–10 keV show a marginal preference for the G. The peak-position of the function (G/LN) with which a flux profile is better fitted (depending on the value of the  $R_{LN}^G$ ) is considered as the most probable state (MPS). The MPS for the energy bands above the synchrotron and IC peaks (such as X-rays, 2–10 and 15–50 keV, and VHE  $\gamma$ -rays) are found to be in the range of 0.4–0.7 times the average flux. On the other hand, the energy bands below the synchrotron and IC peaks (such as HE  $\gamma$ -rays, soft X-rays 0.3–2 keV, UV, optical, and radio emissions) lie in the range of 0.7–1.0 times the average flux. The radio observations with OVRO at 15 GHz show the emergence of an additional component at the high-flux end. A similar distribution has been reported in Sinha et al. (2016) and Liodakis et al. (2017). In our data set, the second peak in the high flux in the flux distribution with OVRO is due to the high flux state of the source during 2012–2013. Since the distribution is bimodal, we do not consider G and LN distributions suitable for describing the flux distribution in this band. Therefore, the flux profile for OVRO data was not constructed. This is shown in the supplementary online material (Fig. F2 in Appendix F). The predictions of the flux profile method in different energy bands are backed by two additional methods: the (binned) Chi-square fit and the (unbinned) log-likelihood fit. While the results of the Chi-square fit depend on the histogram binning, and do not take into account the flux measurement errors, the latter method does not depend on how the data are binned, and it considers the uncertainties of the fluxes. The detailed description of the methods and the results derived with them are reported in the supplementary online material (Appendix G). Similarly to the log-likelihood fit, the flux profile method is also unbinned, and considers the flux uncertainties; but it has the advantage over that it is easier to apply, and it leads to the shape of the distribution, regardless of any a priori knowledge of the underlying shape (which is required for the log-likelihood fit). The Table G1 reports the function preferred by the three methods (G or LN) for all the bands probed. Despite the different characteristics (and caveats) from these three methods, there is a very good agreement in the preferred shape for the flux distributions, with the LN function being the most suitable shape for most of the energy bands probed.

## 7 DISCUSSION AND CONCLUSIONS

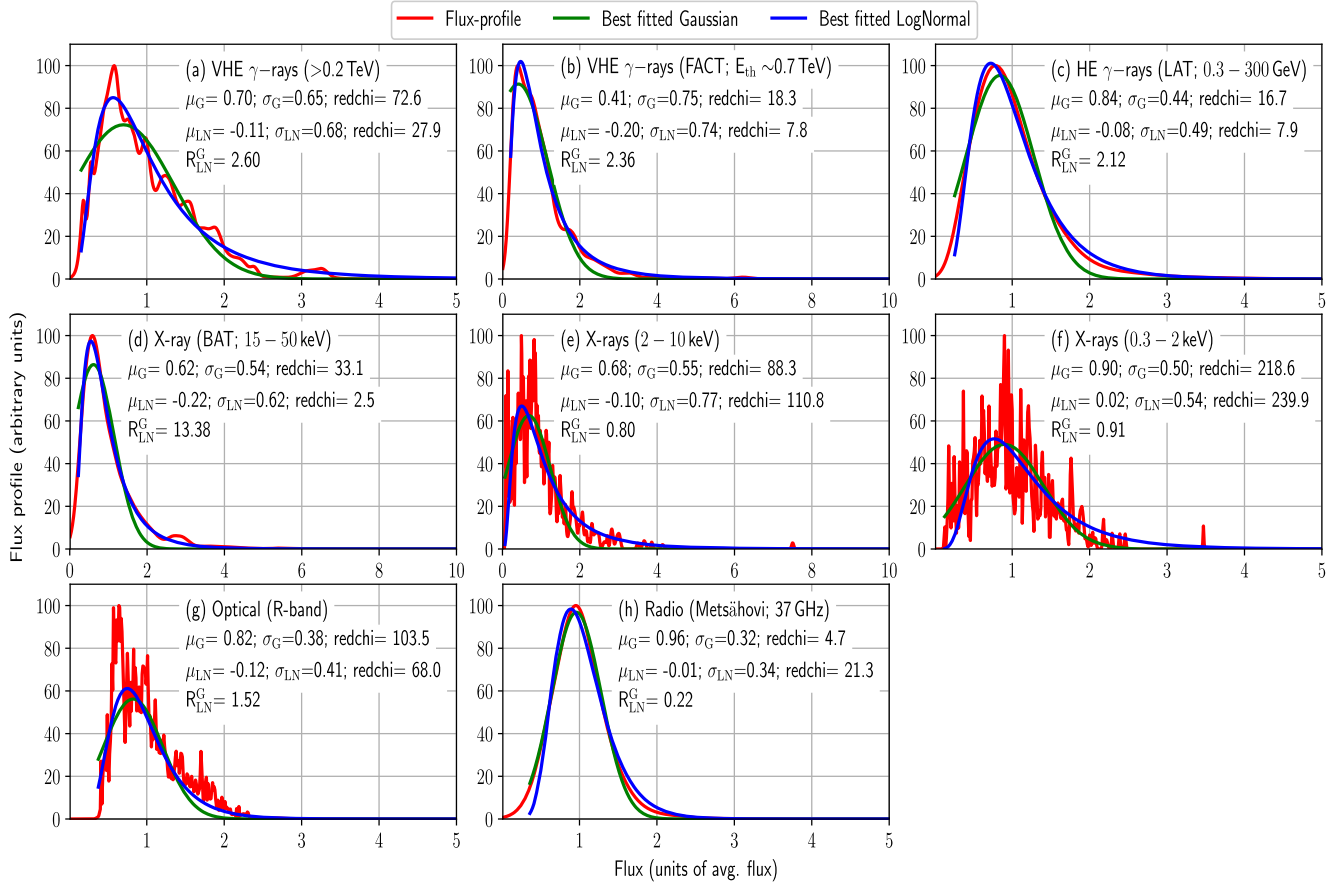
This paper reports a detailed study of the broad-band emission of Mrk 421 during two observing campaigns, 2014 November to 2015 June, and 2015 December to 2016 June. For simplicity, we dubbed them as the 2015 and 2016 observing campaigns. The MWL data set used for this study was collected with 15 instruments, covering the emission of Mrk 421 from radio (with OVRO, Metsähovi, Medicina, and VLBA) to VHE  $\gamma$ -rays (with FACT and MAGIC), and including various instruments covering the optical and UV bands (KVA, ROVOR, West Mountain Observatory, iTelescopes network, and *Swift*-UVOT), X-ray bands (*Swift*-XRT and *Swift*-BAT) and GeV  $\gamma$ -rays (with *Fermi*-LAT). The sensitivity of the instruments used, and the large number of observations performed, enabled the detailed characterization of the MWL variability and correlations during this period. A distinctive characteristic of this multiyear campaign is the large degree of simultaneity in the X-ray and VHE  $\gamma$ -ray observations, which are two energy ranges where the variability is typically the highest and can occur on the shortest time-scales. We consider that the X-ray and VHE observations are simultaneous if taken within 0.3 d (i.e. the same night), although most of the observations were performed within 2 h. The large degree of simultaneity in the observations ensure reliability in the results reported, in contrast to other published works that use multiwavelength data that are contemporaneous (taken within one or a few days), but not simultaneous. This simultaneity is particularly important for the X-ray and VHE  $\gamma$ -ray observations which, as we report in Sections 4 and 5 of this paper, show large variability and a large degree of correlated behaviour on time-scales shorter than a day.

### 7.1 Multiband flux variability and correlations

During the 2015 and 2016 observing campaigns, Mrk 421 showed a very low activity in the X-ray and VHE  $\gamma$ -rays (see Section 3 and Fig. 2), which are the energy bands where the emitted power is the largest. The spectral shape, quantified here with the  $HR_{keV}$  and  $HR_{TeV}$ , also showed periods of extreme softness (very low  $HR_{keV}$  and  $HR_{TeV}$  values), like the one during the time interval of about MJD 57422 to MJD 57474, where the  $HR_{TeV}$  is  $\leq 0.03$ , and the  $HR_{keV}$  is  $\leq 0.25$  (see Figs 7 and 8). We found the typical *harder-when-brighter* trend in the X-ray and VHE  $\gamma$ -ray emission; although we also found a deviation in the  $HR$  versus flux trend for the largest X-ray and VHE  $\gamma$ -ray activity. The flattening in the  $HR$  versus flux trend for high (and low) X-ray fluxes had already been reported in Baloković et al. (2016), but here we report, for the first time, a similar behaviour in the VHE  $\gamma$ -ray band.

The fractional variability showed the typical double-bump structure reported in previous studies of the broad-band (radio to VHE) emission of Mrk 421 during low (non-flaring) activity (e.g. Aleksić et al. 2015b; Baloković et al. 2016), and high (flaring) activity (e.g. Aleksić et al. 2015c; Abeysekara et al. 2020; Acciari et al. 2020). The highest variability is always observed in the highest X-ray and VHE  $\gamma$ -ray energies at a similar level (see Fig. 5).

We also searched for correlated behaviour among the emission from the various energy bands probed with these observations. We quantified these correlations (using Pearson and DCF) and evaluated the significance with Monte Carlo simulations. We detected a significant correlation between the emissions in the X-ray and VHE  $\gamma$ -ray bands. The positive correlation between these bands has been reported with a high confidence level whenever the source showed a flaring activity (e.g. Aleksić et al. 2015c; Acciari et al.



**Figure 13.** Flux distributions of Mrk 421 in the 2007–2016 period in different energy bands, except for FACT, where only data from 2013–2016 period were used (see the supplementary online material in Appendix B), where we used the flux profile method (see the supplementary online material in Appendix E).

**Table 5.** The model parameters for the flux profiles in different energy bands fitted with G and LN distributions. The most probable states (MPS) are retrieved from the function preferred by the flux profile, and presented as fractions of the mean flux (given in the parentheses). The parameter  $R_{LN}^G$  is the ratio of  $redchi$  for LN to the  $redchi$  for G (see main text) and is used to estimate the goodness of fit.  $R_{LN}^G > 1$  means the profile is likely to be fitted better with a LN. The chance probability (p), given in the parentheses in the last column indicates the probability of wrongly reconstructing a LN (G) distribution as a G (LN). See Section 6 and the supplementary online material (Appendix E) for details. The results for the 15-GHz band have not been included here as the distribution is bimodal. See the main text and the supplementary online material (Appendix F) for details.

| Energy bands                                     | G       |            | LN         |               | MPS (Avg. flux)  | Redchi |       | $R_{LN}^G$ (p)                 |
|--|---------|------------|------------|---------------|--|--------|-------|--------------------------------|
|  | $\mu_g$ | $\sigma_g$ | $\mu_{LN}$ | $\sigma_{LN}$ |  | G      | LN    |                                |
| VHE $\gamma$ -rays (MAGIC; $>0.2$ TeV)           | 0.70    | 0.65       | -0.11      | 0.68          | 0.56 ( $2.09 \times 10^{-10}$ ph cm $^{-2}$ s $^{-1}$ )    | 72.6   | 28.0  | 2.6 ( $4.4 \times 10^{-2}$ )   |
| VHE $\gamma$ -rays (FACT; $E_{th} \sim 0.7$ TeV) | 0.41    | 0.75       | -0.20      | 0.74          | 0.47 ( $2.73 \times 10^{-11}$ ph cm $^{-2}$ s $^{-1}$ )    | 18.3   | 7.8   | 2.4 ( $2.7 \times 10^{-1}$ )   |
| HE $\gamma$ -rays (LAT; 0.3–300 GeV)             | 0.84    | 0.44       | -0.08      | 0.50          | 0.72 ( $9.45 \times 10^{-8}$ ph cm $^{-2}$ s $^{-1}$ )     | 16.7   | 8.0   | 2.1 ( $8.1 \times 10^{-2}$ )   |
| X-ray (BAT; 15–50 keV)                           | 0.62    | 0.54       | -0.22      | 0.62          | 0.54 ( $0.27 \times 10^{-2}$ counts cm $^{-2}$ s $^{-1}$ ) | 33.1   | 2.5   | 13.4 ( $1.6 \times 10^{-1}$ )  |
| X-ray (2–10 keV)                                 | 0.68    | 0.55       | -0.10      | 0.77          | 0.68 ( $3.67 \times 10^{-10}$ erg cm $^{-2}$ s $^{-1}$ )   | 88.3   | 111.0 | 0.80 ( $2.4 \times 10^{-2}$ )  |
| X-ray (0.3–2 keV)                                | 0.90    | 0.50       | 0.02       | 0.54          | 0.90 ( $6.82 \times 10^{-10}$ erg cm $^{-2}$ s $^{-1}$ )   | 218.6  | 240.0 | 0.91 ( $1.7 \times 10^{-2}$ )  |
| Optical (R band)                                 | 0.82    | 0.38       | -0.12      | 0.41          | 0.75 (24.37 mJy)   | 103.5  | 68.0  | 1.52 ( $1.0 \times 10^{-3}$ )  |
| Radio (Metsähovi; 37 GHz)                        | 0.96    | 0.32       | -0.01      | 0.34          | 0.90 (0.50 Jy)   | 4.7    | 21.3  | 0.22 ( $<1.0 \times 10^{-4}$ ) |

2020), but it is more elusive during typical or low flux (e.g. Aleksić et al. 2015b; Baloković et al. 2016). Despite the strength of the correlation being similar for the various combinations of X-ray and VHE  $\gamma$ -ray energies probed, we report that the slope in the VHE versus X-ray flux plots changes with the specific energy band being used. In all cases, we found a slope lower than 1, with the largest slope obtained for the highest energies (VHE  $\gamma$ -ray band;  $>1$  TeV) versus the lowest X-ray band (0.3–2 keV). These results (see Fig. C1 and Table 2) are somewhat similar to those reported in

Acciari et al. (2020) during an extreme high activity in 2013 April. The results reported in this paper further support that the X-ray and VHE emissions are closely related without any time delay, for all the energy bands probed, during high and during low activity. This indicates the presence of somewhat similar processes governing the emission of the source during a large range of activity, but showing also complexity in these processes, as is deduced from the diversity in the VHE versus X-ray flux slopes when moving across nearby energy bands.

The strongly correlated zero-lag behaviour between the VHE and X-ray emissions, persistent during the 2015–2016 observing campaigns, indicates that the X-ray and VHE  $\gamma$ -ray emissions are dominated by leptonic scenarios (presumably SSC), where the same population of high-energy electrons radiate simultaneously at X-ray and VHE. The higher variability for the highest energies and the harder-when-brighter behaviour may be interpreted as an indication of injection of high-energy particles dominating the flux variations over a large range of activity. But above a given flux, the spectral shape no longer changes substantially with the flux, which suggests that the flux variations may be dominated by a different process yielding a variability that does not have a strong dependence with energy. One possibility could be a small change in the viewing angle, that would increase the Doppler factor and, in first-order approximation, produce a flux change that is similar in all energies.<sup>12</sup> In order to produce flux changes of about a factor of two, one would need to change  $\delta$  by about 20 per cent, which, for  $\Gamma = 10$  and a viewing angle of  $5^\circ$ , could be achieved by a change in the viewing angle of about  $1^\circ$ . Such change in  $\delta$  would also produce an energy-dependent flux change through the displacement of the broad-band SED, but it would be a relatively small effect (e.g. 2.0 keV would become 2.4 keV).

We did not find a correlated behaviour between the optical and the X-ray bands, and did not find a correlation between the  $\gamma$ -ray emission below 2 GeV and the one above 200 GeV, hence indicating that the rising and falling segments of the two SED bumps may actually be produced by different particle populations, and even located at different regions. However, as reported in Section 5.2, we did observe, for the first time, a significant ( $>3\sigma$ ) correlated behaviour, between the  $>2$  GeV emission measured with *Fermi*-LAT and the VHE fluxes measured with FACT ( $E_{\text{th}} \sim 0.7$  TeV). The correlation, quantified in time-steps of  $\pm 3$  d, occurs only for  $\tau = 0$ , indicating that the emission in these two energy bands is simultaneous within the resolution of the study. This observation suggests that the multi-GeV emission is produced (at least partially) by the same particle population that dominates the VHE emission, but such relation does not exist for the sub-GeV emission. A correlation between GeV and TeV energies for Mrk 421 had also been claimed by Bartoli et al. (2016), using *Fermi*-LAT and ARGO-YBJ. Apart from technical details in the quantification of the correlation, and the somewhat different energy bands considered in that study (median energy of 1.1 TeV for ARGO-YBJ and energies above 0.3 GeV for *Fermi* LAT), the main practical difference is the temporal scale involved in these two studies, with Bartoli et al. (2016) reporting a positive correlation with  $\tau = 0$  within  $\pm 30$  d, while we can ensure simultaneous emission within  $\pm 3$  d.

Owing to the substantially lower fractional variability and the longer variability time-scales observed for the emission from the rising segments of the two SED bumps (namely radio, optical, and GeV emission), the 2015–2016 data set was complemented with data from years 2007–2014 (see the supplementary online material in Appendix B) to enlarge the data set and better evaluate the correlations among these bands (see Section 5). This correlation study, performed in the same fashion as done for the simultaneous X-ray/VHE fluxes, but with time-bins of 15 d instead of 1 d, yielded a number of interesting results, as reported in Sections 5.3–5.5.

We found a positive correlation between the  $>0.3$  GeV emission (from *Fermi*-LAT) and optical ( $R$  band) emission for a range of about

60 d centred at  $\tau = 0$  (see Section 5.3), which confirms and further strengthens the claim made by Carnerero et al. (2017). Overall, this observation indicates that these two bands, belonging to the rising segments of the two SED bumps (and located somewhat close to the peak of the bumps) may indeed be produced (at least partially) by the same particle population and in the same region (or regions). The wide time interval with positive correlation may be due to a large size  $R$  of the region dominating the optical and  $\gamma$ -ray emission. For instance, a variability time-scale of about 30 d can be used to set an upper limit to the size  $R$  of about  $8 \times 10^{17}$  cm for a Doppler factor of 10. And, if the optical/GeV emitting region could be related to the radio emitting region, whose Doppler factor has often been estimated to be lower than 2 (see e.g. Piner, Pant & Edwards 2010), the upper limit to the size  $R$  would be  $2 \times 10^{17}$  cm.

Additionally, we found a positive correlation between the  $>0.3$  GeV emission (from *Fermi*-LAT) and the radio emission at 15 and 37 GHz (from OVRO and Metsähovi) for a range of about 60 d centred at  $\tau \sim 45$  d (see Section 5.4), meaning that the radio emission occurs about 45 d after the GeV emission. The same correlation with the same time lag occurs also for the optical and the radio emissions (see Section 5.5), which is expected given the correlation between  $\gamma$ -rays and optical emission mentioned above. Combining the time lags for the correlations among the GeV,  $R$  band and the 15-GHz fluxes, one obtains an overall time lag between optical/GeV and radio of  $43_{-6}^{+9}$  d. If instead one uses the 37 GHz from Metsähovi, where the DCF plots have less pronounced peak, the overall time lag between optical/GeV and radio is  $37_{-12}^{+15}$  d (see the supplementary online material in Appendix D for details).

A positive correlation between the *Fermi*-LAT and OVRO fluxes for a time lag of about 40 d had been first claimed by Max-Moerbeck et al. (2014). The claim was only at  $2.6\sigma$  ( $p$ -value of 0.0104), and strongly affected by the large  $\gamma$ -ray and radio flares from 2012 July and September, respectively. In this paper, we report a correlation with a significance at the level of  $11\sigma$  when considering the entire data set, and, if we exclude the large flares, the significance is  $9\sigma$ . Therefore, we can confirm and further strengthen the correlation reported in Max-Moerbeck et al. (2014), stating with reliability that this is an intrinsic characteristic in the multiyear emission of Mrk 421, and not a particularity of a rare flaring activity.

Within the scenario of the emission being produced by plasma moving along the jet of Mrk 421, the delay of the radio emission with respect to the  $\gamma$ -ray emission can be considered as an indication that the plasma (or jet disturbance) first crosses the surface of unit  $\gamma$ -ray opacity making the  $\gamma$ -ray emission visible, and then, about 0.2 pc down the jet (assuming a common  $\delta$  of 4 and  $\Gamma$  of 2, see Max-Moerbeck et al. 2014, for details of the calculation), the radio emission is produced when the plasma (or disturbance) crosses the surface of unit radio opacity.

There are three distinct natures of correlation emerging from this study, a) correlation between X-ray and VHE  $\gamma$ -ray LCs at  $\tau = 0$ , b) correlation between optical and HE  $\gamma$ -rays at  $\tau = 0$ , and c) correlation between radio and HE (and optical) LCs at  $\tau \sim 45$  d. The correlation in cases (b) and (c) have broader peaks compared to the case (a). The broader peaks for the radio, optical and GeV emission may be due to the lower variability and longer variability time-scales related to the energy bands in consideration (because the emission involves lower energy particles), or it may be related to the existence of two (or more) different radiation zones responsible for the production of the corresponding radiation components (see Aleksić et al. 2015c, for description of the broad-band SED variability of Mrk 421 with these two theoretical scenarios).

<sup>12</sup>The flux change would depend approximately on  $\delta^{3.5}$  while the dependence in energy would relate to the energy shift that is proportional to  $\delta$ .

## 7.2 Multiband flux distributions

Using the historical MWL data (from 2007 to 2016), we also quantified the flux variations with a methodology that allows us to estimate the flux distributions even for flux measurements with relatively large errors (see the supplementary online material in Appendix E for details). Using this methodology, we determined the most probable flux values and the dispersion in the flux values for all the bands probed (see Fig. 13 and Table 5). Among other things, we found that the most probable flux is close to the average flux for the energy bands below the synchrotron and inverse-Compton SED peaks (i.e. radio, optical, and soft X-rays), while it substantially differs from it for the energy bands above the two SED peaks (i.e. hard X-rays and VHE  $\gamma$ -rays). The flux distributions in radio and soft X-rays are better described with a G function, while the flux distributions in the optical, hard X-rays, HE, and VHE  $\gamma$ -rays are preferably described with a LN function. A LN distribution of flux implies that the emission is being powered by a multiplicative process rather than an additive one. Suggestions have been put forward by several authors that LogNormality is a result of fluctuations in the accretion disc (Uttley et al. 2005; McHardy 2010). If the same behaviour is found in blazars, this may lead to the conclusion that the source of variations in blazars lie outside the jet, i.e. in the accretion discs which then modulate the jet emission.

## 7.3 Radio flare at 37 GHz

On 2015 September 11, the Metsähovi telescope observed an increase by a factor of two in the 37 GHz radio flux, from about 0.5 Jy to about 1.1 Jy (see Fig. 3 and Section 3.2). It is the first time that such a large flux change, with a temporal time-scale shorter than 3 weeks, is observed in the 37 GHz radio emission of Mrk 421. But the quasi-simultaneous flux density measurements at 5 and 24 GHz from the Medicina radio telescope, performed also on September 11, show an enhanced flux density at 5 GHz only, while the 24 GHz flux density is in line with the usual values for the source. As the data are not strictly simultaneous, it is possible that some very short term fluctuation affected the measurement during only some of the observations. This would argue for externally induced short-term variability (scintillation, or instrumental) rather than an episode of flaring from the source, although the current data remain insufficient to make any strong claims on this episode. The VLBA observations show an increase in the polarization fraction on September 22, while it returns to normal values on December 5 (see Fig. 3). The flare could then be explained via a kink instability that momentarily disrupts the ordering of the field and accelerates particles to cause an increase in flux and a decrease in polarization. The disturbance propagates down the jet, causing first a high-energy flare, followed by a millimeter-wave flare, as observed. After the flare, the polarization returns to its normal radial pattern. Other simultaneous observations are those from *Fermi*-LAT, and *Swift*-BAT where there is no substantial enhancement in the  $\gamma$ -ray or X-ray flux activity around the time of the radio flare. There is, however, some structure in the GeV and keV LCs about 40 d before the radio flare, which is similar to the time lags reported in Fig. 12 between multiyear GeV and radio emission.

## 7.4 Hard X-ray component

During the 7-d time interval MJD 57422–57429 (2016 February 4–11) where Mrk 421 showed a very low X-ray flux and low  $HR_{\text{keV}}$  (i.e. soft X-ray spectra), we noted a 15–50 keV flux (from *Swift*-BAT) that is well above the emission that one would expect if the

optical to X-ray emission (from 1 eV to 10 keV), characterized with a log-parabola function, is extrapolated to the hard X-ray range above 15 keV (see Fig. 9). This is the first time that BAT measures a flux significantly above the one expected from the simple extrapolation of the XRT spectral data. But an excess in the hard X-ray with respect to the expected flux from the synchrotron component has already been reported by Kataoka & Stawarz (2016) for Mrk 421, using *NuSTAR* data during a period of very low X-ray and VHE activity in 2013, and considered to be the onset of the SSC component. Such hard X-ray excesses, considered to be the beginning of the SSC component, have also been observed in another blazar, PKS 2155–304, also using *NuSTAR* observations during a period of very low X-ray flux (Madejski et al. 2016; H. E. S. S. et al. 2019). On the other hand, the hard X-ray *NuSTAR* excess in the Mrk 421 data from 2013 was also interpreted within the scenario of the spine/layer jet structure, and considered to be an indication of inverse-Compton emission produced by high-energy electrons from the spine region up-scattering the synchrotron photons from the layer, as was proposed by Chen (2017). Another possible origin of the hard X-ray excess could be a Bethe–Heitler cascade, which is expected to occur in many of the hadronic scenarios, such as the ones that were used to explain the broad-band emission of TXS 0506 + 056 contemporaneous to a high-energy astrophysical neutrino detected by IceCube in 2017 September (e.g. Ansoldi et al. 2018). Moreover, the BAT excess reported here may also be related to the presence of an additional (and narrow) spectral component that appears occasionally, as has been recently reported for Mrk 501 at multi-TeV energies (MAGIC Collaboration et al. 2020), and interpreted as a indication for pile-up in the electron energy distribution, or an indication for electrons accelerated in the vacuum gaps close to the supermassive black hole that is powering the source. The probability of occurrence of hard-X-ray excesses, the theoretical interpretation of the broad-band SED of Mrk 421 for the time period of very low X-ray and VHE fluxes, as well as for the time intervals before and after this time period, will be discussed in a forthcoming paper.

## 7.5 Outlook

Overall, the data set presented in this paper, which focuses on the two observing campaigns in 2015–2016, when Mrk 421 showed very low flux at keV and TeV energies, and without any prominent flare, allowed us to derive a good number of new observational results. The continuation of these multi-instrument observations in the upcoming years, with at least the same depth in temporal and energy coverage, will be important to determine whether these novel features that we report in this paper are rare, or whether they repeat over time.

## ACKNOWLEDGEMENTS

The MAGIC collaboration would like to thank the Instituto de Astrofísica de Canarias for the excellent working conditions at the Observatorio del Roque de los Muchachos in La Palma. The financial support of the German BMBF and MPG; the Italian INFN and INAF; the Swiss National Fund SNF; the ERDF under the Spanish MINECO (FPA2017-87859-P, FPA2017-85668-P, FPA2017-82729-C6-2-R, FPA2017-82729-C6-6-R, FPA2017-82729-C6-5-R, AYA2015-71042-P, AYA2016-76012-C3-1-P, ESP2017-87055-C2-2-P, FPA2017-90566-REDC); the Indian Department of Atomic Energy; the Japanese ICRR, the University of Tokyo, JSPS, and MEXT; the Bulgarian Ministry of Education and Science, National RI Roadmap Project DO1-268/16.12.2019 and the Academy of Finland grant nr. 320045 is gratefully acknowledged. This work was

also supported by the Spanish Centro de Excelencia ‘Severo Ochoa’ SEV-2016-0588 and SEV-2015-0548, the Unidad de Excelencia ‘María de Maeztu’ MDM-2014-0369 and the ‘la Caixa’ Foundation (fellowship LCF/BQ/PI18/11630012), by the Croatian Science Foundation (HrZZ) Project IP-2016-06-9782 and the University of Rijeka Project 13.12.1.3.02, by the DFG Collaborative Research Centers SFB823/C4 and SFB876/C3, the Polish National Research Centre grant UMO-2016/22/M/ST9/00382 and by the Brazilian MCTIC, CNPq, and FAPERJ.

The *Fermi* LAT Collaboration acknowledges generous ongoing support from a number of agencies and institutes that have supported both the development and the operation of the LAT as well as scientific data analysis. These include the National Aeronautics and Space Administration and the Department of Energy in the United States, the Commissariat à l’Energie Atomique and the Centre National de la Recherche Scientifique / Institut National de Physique Nucléaire et de Physique des Particules in France, the Agenzia Spaziale Italiana and the Istituto Nazionale di Fisica Nucleare in Italy, the Ministry of Education, Culture, Sports, Science and Technology (MEXT), High Energy Accelerator Research Organization (KEK) and Japan Aerospace Exploration Agency (JAXA) in Japan, and the K. A. Wallenberg Foundation, the Swedish Research Council and the Swedish National Space Board in Sweden.

Additional support for science analysis during the operations phase is gratefully acknowledged from the Istituto Nazionale di Astrofisica in Italy and the Centre National d’Études Spatiales in France. This work performed in part under DOE Contract DE-AC02-76SF00515.

The authors are very grateful to Matthew Kerr for his guidance and various discussions about the unbinned log-likelihood fits using G and LN PDFs.

The authors acknowledge the use of public data from the Swift data archive, and are particularly thankful to the Swift operations team for maximizing the simultaneity of the VHE and X-ray observations. This research has made use of the XRT Data Analysis Software (XRTDAS) developed under the responsibility of the ASI Science Data Center (ASDC), Italy.

Some of the results reported are based on data taken and assembled by the WEBT collaboration and stored in the WEBT archive at the Osservatorio Astrofisico di Torino - INAF (<http://www.oato.inaf.it/b-lazars/webt/>). The authors are particularly grateful to M.I. Carnerero for discussions about the WEBT data.

The research at Boston University was supported in part by NASA Fermi Guest Investigator grant 80NSSC17K0649. The authors thank H. Zhang for enlightening correspondence.

This publication makes use of data obtained at the Metsähovi Radio Observatory, operated by Aalto University in Finland.

The Medicina radio telescope is funded by the Department of University and Research (MIUR) and is operated as National Facility by the National Institute for Astrophysics (INAF).

The important contributions from ETH Zurich grants ETH-10.08-2 and ETH-27.12-1 as well as the funding by the Swiss SNF and the German BMBF (Verbundforschung Astro- und Astroteilchenphysik) and HAP (Helmholtz Alliance for Astroparticle Physics) are gratefully acknowledged. Part of this work is supported by Deutsche Forschungsgemeinschaft (DFG) within the Collaborative Research Center SFB 876 ‘Providing Information by Resource-Constrained Analysis’, project C3. We are thankful for the very valuable contributions from E. Lorenz, D. Renker and G. Viertel during the early phase of the project. We thank the Instituto de Astrofísica de Canarias for allowing us to operate the telescope at the Observatorio del Roque de los Muchachos in La Palma, the Max-Planck-Institut für Physik for providing us with the mount of

the former HEGRA CT3 telescope, and the MAGIC collaboration for their support.

This research has made use of data from the OVRO 40-m monitoring program (Richards, J. L. et al. 2011, *ApJS*, 194, 29) which is supported in part by NASA grants NNX08AW31G, NNX11A043G, and NNX14AQ89G and NSF grants AST-0808050 and AST-1109911.

## DATA AVAILABILITY

The data underlying this article will be shared on reasonable request to the corresponding author.

## REFERENCES

- Abdo A. A. et al., 2011, *ApJ*, 736, 131  
 Abdollahi S. et al., 2020, *ApJS*, 247, 33  
 Abeyskara A. U. et al., 2017, *ApJ*, 841, 100  
 Abeyskara A. U. et al., 2020, *ApJ*, 890, 97  
 Acciari V. A. et al., 2011, *ApJ*, 738, 25  
 Acciari V. A. et al., 2014, *Astropart. Phys.*, 54, 1  
 Acciari V. A. et al., 2020, *ApJS*, 248, 29  
 Acero F. et al., 2015, *ApJS*, 218, 23  
 Ackermann M. et al., 2011, *ApJ*, 741, 30  
 Ahnen M. L. et al., 2016, *A&A*, 593, A91  
 Ahnen M. L., et al., 2017, *MNRAS*, 472, 2956  
 Albert J. et al., 2007, *ApJ*, 663, 125  
 Aleksić J. et al., 2012, *A&A*, 542, A100  
 Aleksić J. et al., 2015a, *J. High Energy Astrophys.*, 5, 30  
 Aleksić J. et al., 2015b, *A&A*, 576, A126  
 Aleksić J. et al., 2015c, *A&A*, 578, A22  
 Aleksić J. et al., 2016, *Astropart. Phys.*, 72, 76  
 Alves E. P., Zrake J., Fiuza F., 2018, *Phys. Rev. Lett.*, 121, 245101  
 Anderhub H. et al., 2013, *J. Instrum.*, 8, P06008  
 Ansoldi S. et al., 2018, *ApJ*, 863, L10  
 Atwood W. B. et al., 2009, *ApJ*, 697, 1071  
 Baloković M. et al., 2016, *ApJ*, 819, 156  
 Bartoli B. et al., 2016, *ApJS*, 222, 6  
 Beck M. et al., 2019, Proc. Sci., 36th International Cosmic Ray Conference (ICRC2019). SISSA, Trieste, PoS#630  
 Biland A. et al., 2014, *J. Instrum.*, 9, P10012  
 Bloom S. D., Marscher A. P., 1996, *ApJ*, 461, 657  
 Breeveld A. A., Landsman W., Holland S. T., Roming P., Kuin N. P. M., Page M. J., 2011, in McEnery J. E., Racusin J. L., Gehrels N., eds, AIP Conf. Proc. Vol. 1358, Gamma Ray Bursts 2010. Astron. Soc. Pac., New York, p. 373  
 Bretz T., 2019, *Astropart. Phys.*, 111, 72  
 Bretz T., Dorner D., 2010, in Leroy C., Ranchoita P.-G., Barone M., Gaddi A., Price L., Ruchti R., eds, Astroparticle, Particle and Space Physics, Detectors and Medical Physics Applications. World Scientific Publishing Co. Pte. Ltd., p. 681  
 Buckley J. H. et al., 1996, *ApJ*, 472, L9  
 Burrows D. N. et al., 2005, *Space Sci. Rev.*, 120, 165  
 Cao G., Wang J., 2013, *PASJ*, 65, 109  
 Carnerero M. I. et al., 2017, *MNRAS*, 472, 3789  
 Cawthorne T. V., Jorstad S. G., Marscher A. P., 2013, *ApJ*, 772, 14  
 Chatterjee S., Degraf C., Richardson J., Zheng Z., Nagai D., Di Matteo T., 2012, *MNRAS*, 419, 2657  
 Chen L., 2017, *ApJ*, 842, 129  
 Dong L., Zhang H., Giannios D., 2020, *MNRAS*, 494, 1817  
 Donnarumma I. et al., 2009, *ApJ*, 691, L13  
 Dorner D. et al., 2017, Proc. Sci., 35th International Cosmic Ray Conference (ICRC2017). SISSA, Trieste, PoS#609  
 Dorner D. et al., 2019, *Galaxies*, 7, 57  
 Edelson R. A., Krolik J. H., 1988, *ApJ*, 333, 646  
 Fitzpatrick E. L., 1999, *PASP*, 111, 63  
 Fossati G. et al., 2008, *ApJ*, 677, 906  
 Gaidos J. A. et al., 1996, *Nature*, 383, 319

- Gehrels N. et al., 2004, *ApJ*, 611, 1005
- Giebels B., Degrange B., 2009, *A&A*, 503, 797
- Gioletti M., Righini S., 2020, *MNRAS*, 492, 2807
- H. E. S. S., Fermi NuSTAR collaborations, 2019, preprint ([arXiv:1912.07273](https://arxiv.org/abs/1912.07273))
- Hildebrand D. et al., 2017, Proc. Sci., 35th International Cosmic Ray Conference (ICRC2017). SISSA, Trieste, Pos#779
- Horan D. et al., 2009, *ApJ*, 695, 596
- Hovatta T. et al., 2015, *MNRAS*, 448, 3121
- Jorstad S. G., Marscher A. P., Mattox J. R., Wehrle A. E., Bloom S. D., Yurchenko A. V., 2001, *ApJS*, 134, 181
- Jorstad S. G. et al., 2007, *AJ*, 134, 799
- Jorstad S. G. et al., 2017, *ApJ*, 846, 98
- Kalberla P. M. W., Burton W. B., Hartmann D., Arnal E. M., Bajaja E., Morras R., Pöppel W. G. L., 2005, *A&A*, 440, 775
- Kapanadze B., Dorner D., Romano P., Vercellone S., Kapanadze S., Tabagari L., 2017, *ApJ*, 848, 103
- Kataoka J., Stawarz Ł., 2016, *ApJ*, 827, 55
- Katarzyński K., Sol H., Kus A., 2003, *A&A*, 410, 101
- Krennrich F. et al., 2002, *ApJ*, 575, L9
- Krimm H. A. et al., 2013, *ApJS*, 209, 14
- Lähteenmäki A., Valtaoja E., 2003, *ApJ*, 590, 95
- León-Tavares J., Valtaoja E., Tornikoski M., Lähteenmäki A., Nieppola E., 2011, *A&A*, 532, A146
- Li W., Jha S., Filippenko A. V., Bloom J. S., Pooley D., Foley R. J., Perley D. A., 2006, *PASP*, 118, 37
- Lico R. et al., 2014, *A&A*, 571, A54
- Liodakis I., Pavlidou V., Hovatta T., Max-Moerbeck W., Pearson T. J., Richards J. L., Readhead A. C. S., 2017, *MNRAS*, 467, 4565
- Lyubarskii Y. E., 1997, *MNRAS*, 292, 679
- Macomb D. J. et al., 1995, *ApJ*, 449, L99
- Madejski G. M. et al., 2016, *ApJ*, 831, 142
- MAGIC Collaboration, 2020, *A&A*, 637, A86
- Mahlke M. et al., 2017, Proc. Sci., 35th International Cosmic Ray Conference (ICRC2017). SISSA, Trieste, PoS#612
- Mannheim K., 1993, *A&A*, 269, 67
- Marscher A., 2016, *Galaxies*, 4, 37
- Marscher A. P., Jorstad S. G., Mattox J. R., Wehrle A. E., 2002, *ApJ*, 577, 85
- Max-Moerbeck W. et al., 2014, *MNRAS*, 445, 428
- McEnery J. et al., 1997, in Potgieter M. S., Raubenheimer C., van der Walt D. J., eds, Proc. 25th International Cosmic Ray Conference. Potchefstroom University, South Africa, p. 257
- McHardy I., 2010, in Tomaso B., ed., Lecture Notes in Physics. Springer Verlag, Berlin, p. 203
- McHardy I. M., Koerding E., Knigge C., Uttley P., Fender R. P., 2006, *Nature*, 444, 730
- Mücke A., Protheroe R. J., Engel R., Rachen J. P., Stanev T., 2003, *Astropart. Phys.*, 18, 593
- Nakagawa K., Mori M., 2013, *ApJ*, 773, 177
- Nalewajko K., 2017, *Galaxies*, 5, 64
- Narayan R., Piran T., 2012, *MNRAS*, 420, 604
- Nilsson K., Pasanen M., Takalo L. O., Lindfors E., Berdyugin A., Ciprini S., Pforr J., 2007, *A&A*, 475, 199
- Pacholczyk A. G., 1970, Series of Books in Astronomy and Astrophysics. Freeman, San Francisco
- Peterson B. M., Wanders I., Horne K., Collier S., Alexander T., Kaspi S., Maoz D., 1998, *PASP*, 110, 660
- Peterson B. M. et al., 2004, *ApJ*, 613, 682
- Petropoulou M., Coenders S., Dimitrakoudis S., 2016, *Astropart. Phys.*, 80, 115
- Piner B. G., Pant N., Edwards P. G., 2010, *ApJ*, 723, 1150
- Poutanen J., Zdziarski A. A., Ibragimov A., 2008, *MNRAS*, 389, 1427
- Press W. H., Teukolsky S. A., Vetterling W. T., Flannery B. P., 2002, Numerical Recipes in C++: The Art of Scientific Computing. William H. Press
- Punch M. et al., 1992, *Nature*, 358, 477
- Ramakrishnan V., Hovatta T., Nieppola E., Tornikoski M., Lähteenmäki A., Valtaoja E., 2015, *MNRAS*, 452, 1280
- Richards J. L. et al., 2011, *ApJS*, 194, 29
- Roming P. W. A. et al., 2005, *Space Sci. Rev.*, 120, 95
- Romoli C., Chakraborty N., Dorner D., Taylor A., Blank M., 2018, *Galaxies*, 6, 135
- Schlafly E. F., Finkbeiner D. P., 2011, *ApJ*, 737, 103
- Sinha A. et al., 2016, *A&A*, 591, A83
- Sinha A., Sahayanathan S., Acharya B. S., Anupama G. C., Chitnis V. R., Singh B. B., 2017, *ApJ*, 836, 83
- Sobolewska M. A., Siemiginowska A., Kelly B. C., Nalewajko K., 2014, *ApJ*, 786, 143
- Teraesranta H. et al., 1998, *A&AS*, 132, 305
- Ulucykont M., Bernardini E., Satalecka K., Clavero R., Shayduk M., Kalekin O., 2010, *A&A*, 524, A48
- Ulrich M.-H., Kinman T. D., Lynds C. R., Rieke G. H., Ekers R. D., 1975, *ApJ*, 198, 261
- Uttley P., McHardy I. M., 2001, *MNRAS*, 323, L26
- Uttley P., McHardy I. M., Vaughan S., 2005, *MNRAS*, 359, 345
- Valverde J. et al., 2020, *ApJ*, 891, 170
- van den Berg J. P., Böttcher M., Domínguez A., López-Moya M., 2019, *ApJ*, 874, 47
- Vaughan S., Edelson R., Warwick R. S., Uttley P., 2003, *MNRAS*, 345, 1271
- Villata M., Raiteri C. M., Lanteri L., Sobrito G., Cavallone M., 1998, *A&AS*, 130, 305
- Zanin R. et al., 2013, Proceedings of the 33rd International Cosmic Ray Conference (ICRC2013). Rio de Janeiro, Brazil, p. 0773
- Zhang H., Li H., Guo F., Taylor G., 2017, *ApJ*, 835, 125
- Zweerink J. A. et al., 1997, *ApJ*, 490, L141

## SUPPORTING INFORMATION

Supplementary data are available at *MNRAS* online.

### Supplementary material file for review.pdf

Please note: Oxford University Press is not responsible for the content or functionality of any supporting materials supplied by the authors. Any queries (other than missing material) should be directed to the corresponding author for the article.

<sup>1</sup>*Inst. de Astrofísica de Canarias, E-38200 La Laguna, and Universidad de La Laguna, Dpto. Astrofísica, E-38206 La Laguna, Tenerife, Spain*

<sup>2</sup>*Università di Udine, and INFN Trieste, I-33100 Udine, Italy*

<sup>3</sup>*Japanese MAGIC Consortium: ICRR, The University of Tokyo, 277-8582 Chiba, Japan; Department of Physics, Kyoto University, 606-8502 Kyoto, Japan; Tokai University, 259-1292 Kanagawa, Japan; Physics Program, Graduate School of Advanced Science and Engineering, Hiroshima University, 739-8526 Hiroshima, Japan; Konan University, 658-8501 Hyogo, Japan; RIKEN, 351-0198 Saitama, Japan*

<sup>4</sup>*National Institute for Astrophysics (INAF), I-00136 Rome, Italy*

<sup>5</sup>*Croatian Consortium: University of Rijeka, Department of Physics, 51000 Rijeka, Croatia; University of Split – FESB, 21000 Split, Croatia; University of Zagreb – FER, 10000 Zagreb, Croatia; University of Osijek, 31000 Osijek, Croatia; Rudjer Boskovic Institute, 10000 Zagreb, Croatia*

<sup>6</sup>*Saha Institute of Nuclear Physics, HBNI, 1/AF Bidhannagar, Salt Lake, Sector-1, Kolkata 700064, India*

<sup>7</sup>*IPARCOS Institute and EMFTEL Department, Universidad Complutense de Madrid, E-28040 Madrid, Spain*

<sup>8</sup>*Centro Brasileiro de Pesquisas Físicas (CBPF), URCA, 22290-180 Rio de Janeiro (RJ), Brazil*

<sup>9</sup>*Faculty of Physics and Applied Informatics, Department of Astrophysics, University of Lodz, PL-90-236 Lodz, Poland*

<sup>10</sup>*Università di Siena and INFN Pisa, I-53100 Siena, Italy*

<sup>11</sup>*Deutsches Elektronen-Synchrotron (DESY), D-15738 Zeuthen, Germany*

<sup>12</sup>*Università di Padova and INFN, I-35131 Padova, Italy*

<sup>13</sup>*Centro de Investigaciones Energéticas, Medioambientales y Tecnológicas, E-28040 Madrid, Spain*



- <sup>14</sup>*Istituto Nazionale Fisica Nucleare (INFN), I-00044 Frascati (Roma), Italy*
- <sup>15</sup>*Max-Planck-Institut für Physik, D-80805 München, Germany*
- <sup>16</sup>*Institut de Física d'Altes Energies (IFAE), The Barcelona Institute of Science and Technology (BIST), E-08193 Bellaterra (Barcelona), Spain*
- <sup>17</sup>*Università di Pisa and INFN Pisa, I-56126 Pisa, Italy*
- <sup>18</sup>*ICCUB, IEEC-UB, Universitat de Barcelona, E-08028 Barcelona, Spain*
- <sup>19</sup>*The Armenian Consortium: ICRA Net-Armenia at NAS RA, A. Alikhanyan National Laboratory, Yerevan 0036, Republic of Armenia*
- <sup>20</sup>*Finnish MAGIC Consortium: Finnish Centre of Astronomy with ESO (FINCA), University of Turku, FI-20014 Turku, Finland; Astronomy Research Unit, University of Oulu, FI-90014 Oulu, Finland*
- <sup>21</sup>*Technische Universität Dortmund, D-44221 Dortmund, Germany*
- <sup>22</sup>*Departament de Física, and CERES-IEEC, Universitat Autònoma de Barcelona, E-08193 Bellaterra, Spain*
- <sup>23</sup>*Inst. for Nucl. Research and Nucl. Energy, Bulgarian Academy of Sciences, BG-1784 Sofia, Bulgaria*
- <sup>24</sup>*Universität Würzburg, D-97074 Würzburg, Germany*
- <sup>25</sup>*ETH Zurich, Institute for Particle Physics and Astrophysics, Otto-Stern-Weg 5, CH-8093 Zurich, Switzerland*
- <sup>26</sup>*TU Dortmund, Experimental Physics 5, Otto-Hahn-Str. 4a, D-44227 Dortmund, Germany*
- <sup>27</sup>*Department of Astronomy, University of Geneva, Chemin d'Écogia 16, CH-1290 Versoix, Switzerland*
- <sup>28</sup>*Institute for Theoretical Physics and Astrophysics, University of Würzburg, Emil-Fischer-Str. 31, D-97074 Würzburg, Germany*
- <sup>29</sup>*École Polytechnique, CNRS/IN2P3, Laboratoire Leprince-Ringuet, F-91128 Palaiseau, France*
- <sup>30</sup>*INAF – Istituto di Radioastronomia, Bologna, Italy*
- <sup>31</sup>*Space Science Data Center (SSDC) – ASI, via del Politecnico, s.n.c., I-00133 Roma, Italy*
- <sup>32</sup>*INAF – Osservatorio Astronomico di Roma, via di Frascati 33, I-00040 Monteporzio, Italy*
- <sup>33</sup>*Italian Space Agency, ASI, via del Politecnico snc, I-00133 Roma, Italy*
- <sup>34</sup>*Department of Physics, University of Colorado Denver, Denver, Colorado, CO 80217-3364, USA*
- <sup>35</sup>*Department of Physics and Astronomy, Brigham Young University, Provo, UT 84602, USA*
- <sup>36</sup>*Institute for Astrophysical Research, Boston University, 725 Commonwealth Avenue, Boston, MA 02215, USA*
- <sup>37</sup>*Astronomical Institute, St. Petersburg State University, Universitetskij Pr. 28, Petrodvorets, 198504 St. Petersburg, Russia*
- <sup>38</sup>*Aalto University Metsähovi Radio Observatory, Metsähovintie 114, FIN-02540 Kylmälä, Finland*
- <sup>39</sup>*Aalto University Department of Electronics and Nanoengineering, P.O. Box 15500, FIN-00076 Aalto, Finland*
- <sup>40</sup>*Astronomy Department, Universidad de Concepción, Casilla 160-C, Concepción, Chile*
- <sup>41</sup>*European Space Agency, European Space Astronomy Centre, C/ Bajo el Castillo s/n, 28692 Villanueva de la Cañada, Madrid, Spain*
- <sup>42</sup>*INAF Istituto di Radioastronomia, Stazione di Medicina, via Fiorentina 3513, I-40059 Villafontana (BO), Italy*
- <sup>43</sup>*Astrophysics Science Division, NASA Goddard Space Flight Center, 8800 Greenbelt Road, Greenbelt, MD 20771, USA*
- <sup>44</sup>*Department of Physics, University of Maryland, Baltimore County, 1000 Hilltop Circle, Baltimore, MD 21250, USA*

This paper has been typeset from a  $\text{\TeX}/\text{\LaTeX}$  file prepared by the author.